The background features a series of overlapping, semi-transparent blue rectangles that create a sense of depth and movement. These rectangles are arranged in a way that suggests a staircase or a series of steps leading upwards. Additionally, there are diagonal lines and gradients of blue that sweep across the lower portion of the image, adding to the dynamic and modern aesthetic.

At Borin, we turn company
needs into reality, creating
custom solutions that allow
them to work peacefully.

Work Peacefully.

A promise that includes the commitment to study and offer solutions tailored to each specific need, taking care of corporate hygiene from every angle.

We are fully aware that hygiene is an absolute priority, and we are ready to take this responsibility seriously. We pay close attention to the smallest details because we believe even the tiniest nuances can lead to significant improvements. We closely observe the consumer and how our products are used, picking up on suggestions and signals that help us make our service more practical, useful, and simple.

Our goal is to take care of everything so that our customers can focus on their work without any worries.





Borin Group

Borin s.r.l. was established in 1987 by its current President, Fausto Borin, whose extensive technical-commercial experience in the washing and sanitizing sector led to the creation of a company dedicated to enhancing and simplifying its customers' work.

Initially, the company was primarily involved in trading cleaning machinery. Subsequently, with the involvement of Fausto Borin's children, it transitioned into the design and production of cutting-edge systems within the industrial hygiene field.

Between 2017 and 2020, the group invested in studying and researching new technologies, leading to the establishment of new companies - Borin Solutions, Borin Line, B-Tech, and B.S.S. This marked the comprehensive expansion of the Group's presence into the food, cosmetic, and pharmaceutical industries. Today, Borin stands as a recognized national market leader.

The Group, as it exists today, is the outcome of a collaborative family effort and the integration of four specialized companies, all dedicated to delivering a 360° service to its valued customers.



COMMERCIAL ▾

Providing companies across the country with top-tier solutions for cleaning and sanitizing environments, individuals, and equipment, along with a comprehensive design service for departmental technical furnishings.



PRODUCTION ▴

Engaged in technological research, design, and construction of industrial hygiene plants, machinery, and equipment. It responds to the demands of the international market.



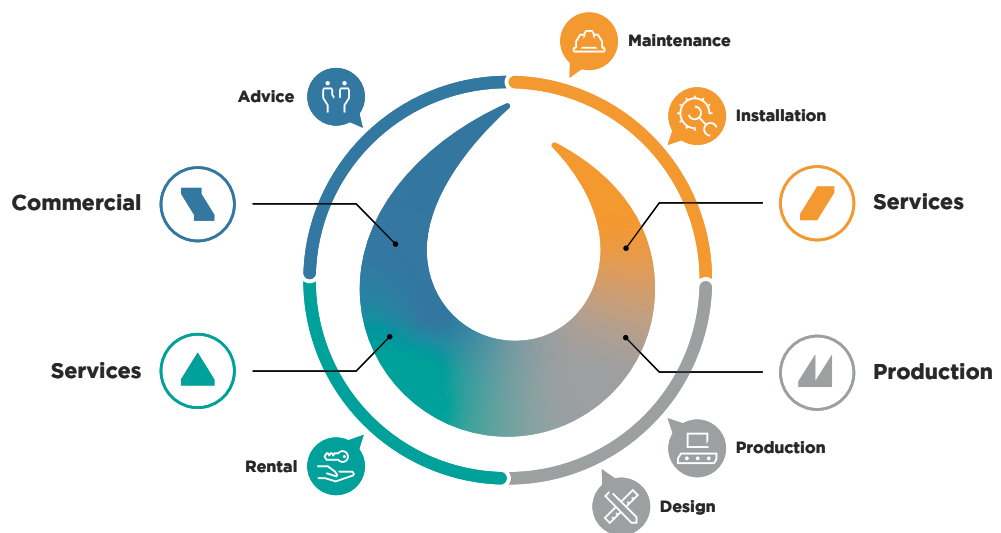
SERVICES ▸

Specializing in the installation and maintenance of systems offered by the Borin Group.



SERVICES ▲

Offering and managing long-term rentals of plants, machinery, and equipment for the cleaning and sanitization of companies.



The Borin Group's unwavering passion, anchored in the principles of integrity, honesty, and transparency, translates into comprehensive customer support. We guide our customers through a thorough problem analysis and develop the most suitable solutions for them.

This is the essence of our motto: "**Work peacefully**, we'll handle the rest."

The right solution for every space.

1 FILTER AREAS

Machines designed to ensure hygiene and safety in production areas, guaranteeing compliance with preventive measures such as hand washing, sole disinfection, and the use of appropriate clothing. Essential to prevent contamination and maintain a hygienic work environment.

2 WASHING SYSTEMS

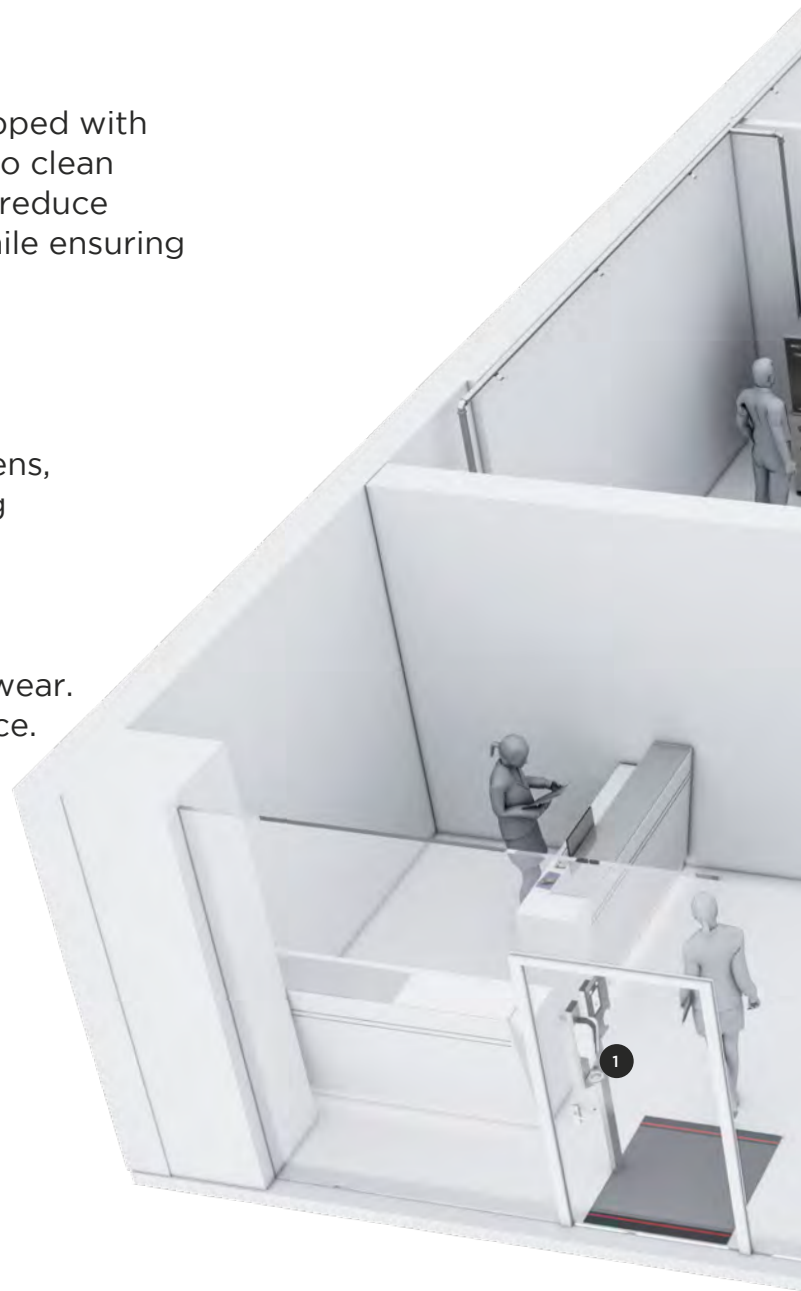
Centralized, multi-pressure systems equipped with accessories, allowing multiple operators to clean simultaneously. Designed to significantly reduce energy, water consumption, and labor while ensuring the highest standards of cleanliness and hygiene.

3 PREMISES FURNISHING

Essential furnishings for setting up canteens, changing rooms, and bathrooms, meeting all functional needs.

4 SANITIZATION AND CLEANING

Cleaning equipment, products, and workwear. Everything needed to complete the service.



Work
Peacefully



Custom area design

The design of company departments enhances employee well-being and productivity by creating more comfortable and functional environments.

Filter areas



- 1. Signage
- 2. Stainless steel mirrors
- 3. Dispensers and bins
- 4. Extreme Medium
- 5. Cart barrier strips
- 6. Silver carpet
- 7. Color-coded pallet jack

CHANGING ROOMS



- 1. Sanitizer
- 2. Lockers
- 3. Ozone cabinets
- 4. Benches
- 5. Baskoz bins
- 6. HPL and stainless steel doors

Thanks to our experience and 3D technology, we are able to create a customized project that reflects the needs of each company.

TOILETS AND SHOWERS

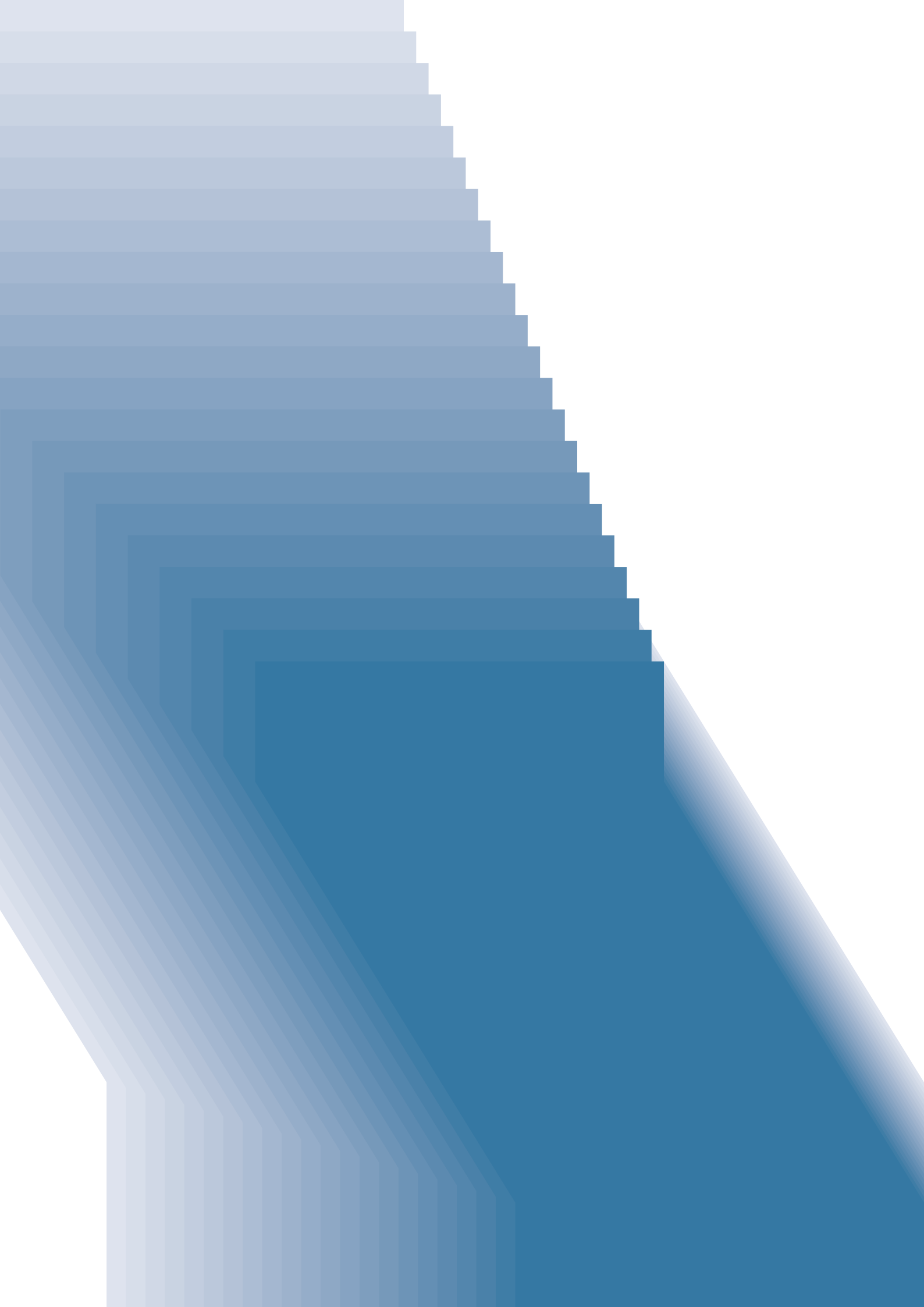


- | | | | |
|---------------------|--------------------------|---------------------------------|-----------------------------|
| 1. Shower enclosure | 4. Furniture accessories | 7. Sensor-activated flush plate | 10. Sinks |
| 2. Toilet cubicle | 5. Dispensers | 8. Drainage channels | 11. Stainless steel mirrors |
| 3. Shower set | 6. Hand dryers | 9. Drainage pits | |

CANTEENS



- | | | |
|--------------------------|--------------------|----------------------|
| 1. Dispensers | 3. Locker cabinets | 5. Sinks |
| 2. Food warming cabinets | 4. Baskoz bins | 6. Tables and chairs |



FILTER AREAS

Sanitizing stations	4
Sanitizing station combinations	14
Accessories	16
Access controls	17
Modular solutions	20
Sanitization and protection systems	22
Carpets	26
Multi-purpose columns	34
Customizations available upon request	35
Dispenser, bins and accessories for filter areas	36

WASHING SYSTEMS

Multi-pressure centralized washing systems	44
Multi-pressure systems	48
Mobile washing stations	52
Washing stations on column	54
Washing room	58
Conveyor belt washing devices	60
Vehicle washing	62
Accessories for washing systems	64
Intelligent collectors	68

PREMISES FURNISHING

Sinks and washbasins	72
Dyson partnership	82
Lockers and accessories in color code	84
Various accessories	87
Filter area for cleanroom	88
Stainless steel accessories	90
Cabinets in stainless steel and zinc-coated plastic	91
Canteen area and doors	92
Drains and drain channels	96
Furniture accessories for interiors	98
Sanitization for clothing and accessories	100
Furniture and equipment for laboratories	104

SANITIZATION AND CLEANING

Industrial stainless steel scrubbers and floor scrubber dryers	110
Industrial sweepers	111
High-pressure cleaners and steam machines	112
ATEX vacuum cleaners and floor scrubber dryers	114
Vacuum Systems	116
Static industrial parts washers	118
Professional dishwashers	120
Washing machines	122
Washing machines and dryers	126
Insect traps	127
Color-coded equipment	128
Detectable equipment	132
Workwear and safety equipment	134
Cleaning equipment and detergents	140
RefineAir partnership	142
Sanitizing devices	145
Special accessories for safety	146
Accessories	148
Client portfolio	153





Work
Peacefully

1 — Filter areas

EXTREME

Maximum hygiene
safety for operators.

Complete sanitizing station designed for
soaping, washing, drying, and sanitizing hands,
in addition to brushing, washing, and sanitizing
operators' footwear. The electromechanical
turnstile enforces the correct procedure.



Watch the demonstration video:



EXTREME MEDIUM

Washing/brushing of soles - Soaping, washing, air drying (Dyson technology), and sanitization of hands - Access via turnstile

I 1.550 - w 830 - h 1.620 mm - 400 V



EXTREME MEDIUM WITH PAPER

Washing/brushing of soles - Soaping, washing, drying with paper, and sanitization of hands - Access via turnstile

I 1.834 - w 830 - h 1.685 mm - 400 V



KOBRA MEDIUM

Washing/brushing of soles - Sanitization of hands - Access via turnstile
l 1.527 - w 830 - h 1.620 mm - 400 V



Watch the
demonstration
video:



KOBRA MINI

Washing/brushing of soles - Sanitization of hands - Access via turnstile
l 966 - w 830 - h 1.605 mm - 400 V



Watch the
demonstration
video:



BASE MEDIUM

Washing/brushing of soles

l 1.527 - w 830 - h 1.162 mm - 400 V



BASE MINI

Washing/brushing of soles

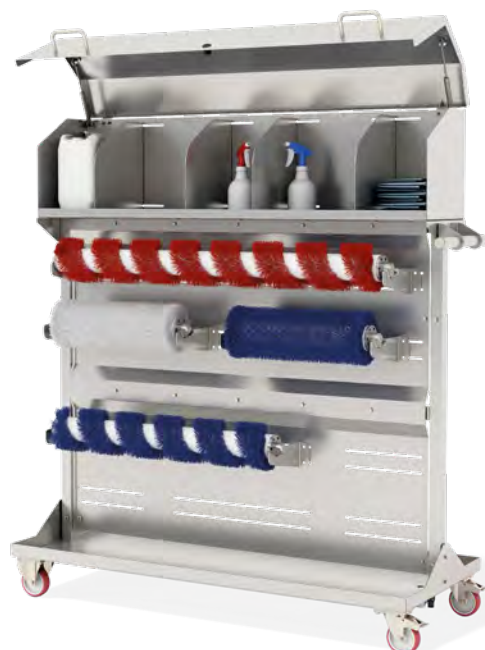
l 874 - w 809 - h 1.090 mm - 400 V



MAINTENANCE AND CLEANING TROLLEY FOR STATIONS

Brush maintenance/replacement

l 1.502 - w 600 - h 1.835 mm



Hygiene and protection for a safe environment.

Cubana Pro Maxi is a sanitizing station for hand soaping, washing, drying, and disinfection. At the same time, sole disinfection takes place via the Silver carpet with silver ions and Biomaster coating. The electromechanical turnstile ensures that each operator follows the correct sanitation procedure. This solution is suitable for dry environments.



Watch the
demonstration
video:



CUBANA PRO MAXI

Sanitization of soles with silver ions carpet - Soaping, washing, drying, and sanitization of hands - Access via turnstile

I 1.660 - w 796 - h 1.412 mm - 230 V



CUBANA PRO MAXI WITH PAPER

Sanitization of soles with silver ions carpet - Soaping, washing, drying with paper, and sanitization of hands - Access via turnstile

I 1.911 - w 800 - h 1.696 mm - 230 V



Sanitizing stations

CUBANA MAXI

Soaping, washing, drying, and sanitization of hands - Access via turnstile

l 1.660 - w 695 - h 1.414 mm - 230 V



CUBANA MAXI WITH PAPER

Soaping, washing, drying with paper, and sanitization of hands - Access via turnstile

l 1.911 - w 695 - h 1.691 mm - 230 V



Watch the demonstration video:



CUBANA PRO MEDIUM

Sanitization of soles with silver ions carpet - Soaping/Sanitization of hands - Access via turnstile
l 1.240 - w 905 - h 1.470 mm - 230 V



CUBANA - WALL UNIT

Soaping/Sanitization of hands
l 930 - w 333 - h 1.305 mm - 230 V



CUBANA MEDIUM

Soaping/Sanitization of hands - Access via turnstile
l 1.060 - w 806 - h 1.465 mm - 230 V



ECOLOGICAL POINT KIT WITH BULL MINI

Washing/brushing of shoes/boots, stainless steel structure with soaping, washing, drying with paper, bin for paper, hand sanitization, and stainless steel mirror

I 980 - w 570 - h 1.877 mm - 400 V



Watch the demonstration video:



BULL MINI ECO

Washing/brushing of shoes

I 725 - w 500 - h 1.244 mm - 400 V



BULL MINI

Washing/brushing with dual-direction brushing for soles and shoe tips - Stainless steel tank with level sensor

I 725 - w 500 - h 1.144 mm - 400 V



Watch the demonstration video:



Watch the demonstration videos:



Bull Medium



Bull Maxi

BULL MEDIUM

Washing/brushing of boots

I 760 - w 780 - h 1.150 mm - 400 V



BULL MAXI

Washing/brushing of boots in line

I 2.010 - w 800 - h 1.222 mm - 400 V



Watch the demonstration video:



NETTUNO

Washing/brushing of aprons and gloves

I 1.574 - w 575 - h 1.102 mm - 400 V



COMBO

Efficiency in synergy. Hygiene without compromise.

Combined solutions for the complete sanitization of personnel. Each station integrates into a single process the washing and brushing of footwear or boots, hand sanitization, and access control via turnstile. The machines work in synergy to ensure speed, effectiveness, and compliance with hygiene protocols.



Watch the demonstration video:



EXTREME MEDIUM COMBO

Boot washing/brushing in-line - Sole washing/brushing - Soaping, washing, air drying (Dyson technology), and sanitization of hands - Turnstile

Extreme Medium can also be combined with Bull Medium - Also available in a version with paper drying.

I 3.860 - w 830 - h 1.620 mm



KOBRA MEDIUM + BULL MEDIUM

Boot washing/brushing - Sole washing/brushing - Hand sanitization - Turnstile

Kobra Medium can also be combined with Bull Medium - Also available in a version with paper drying.

I 3.837 - w 830 - h 1.620 mm



DOCUMENT HOLDER

Ø to anchor 33,7 / 42,4 mm



SHELVES

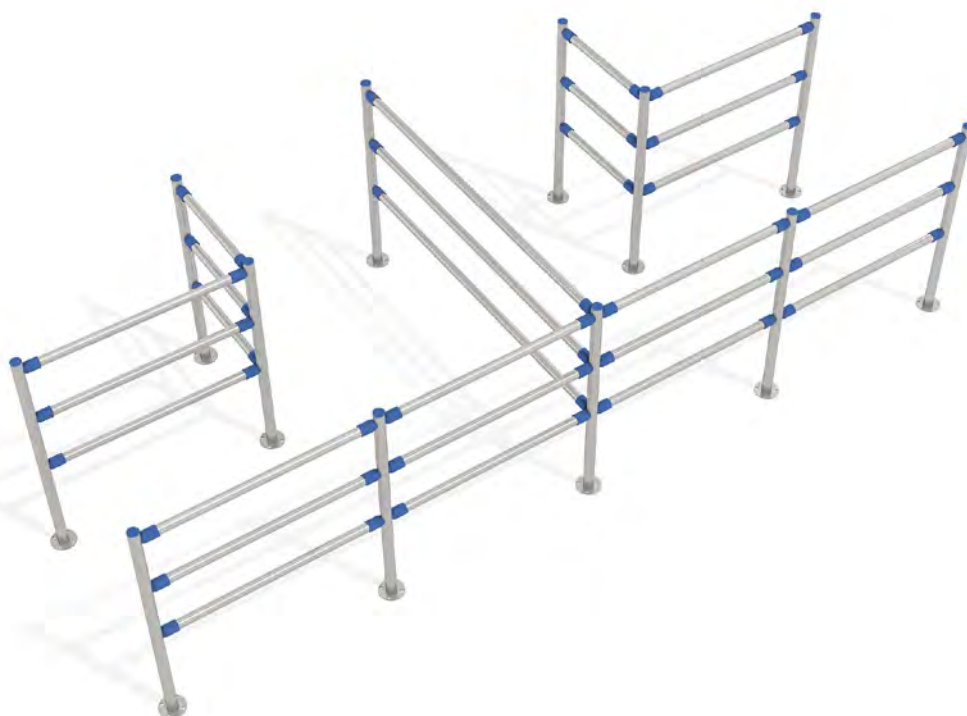
Ø to anchor 33,7 / 42,4 mm



MODULAR BARRIERS

Tailored Stainless Steel barriers and railings

Supports in colour
code:



ACCESS CONTROL - TURNSTILE

Mechanical or electronical turnstile with floor mounting plate

l 789 - w 784 - h 1.072 mm



COMBINED TURNSTILE

Sole sanitization with Silver carpet - Facial recognition

l 1.120 - w 950 - h 1.560 mm - 230 V



TRIPOD TURNSTILE

Electromechanical or motorized, with an arm drop system in case of emergency, made of stainless steel



GATE WITH SLIDING DOORS

Motorized, made of stainless steel, with backlit tempered glass doors



SWING TURNSTILE WITH RADAR

Bidirectional, motorized, made of stainless steel, with a luminous signal ring



SWING TURNSTILE WITH RADAR

Bidirectional, motorized, made of stainless steel with a 10 mm tempered glass panel, featuring a luminous signal ring



SWING TURNSTILE SALOON WITH RADAR

Motorized, with provisions for one or two activation radars



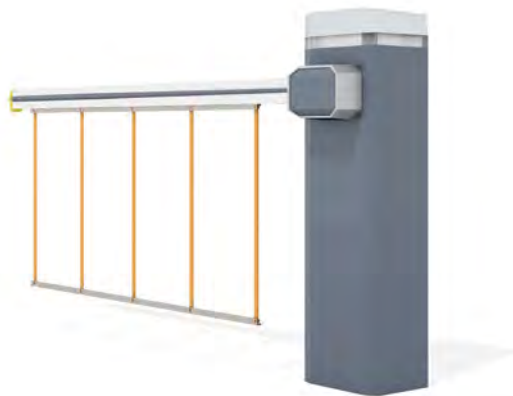
SWING GATE

Certified for emergency exits, entirely made of stainless steel with key lock and panic safety locking pin



ROAD BARRIER

Ideal solution for intensive use on driveways



LOW TURNSTILE WITH 4 SECTIONS

Bidirectional, electromechanical or motorized



VERTICAL TURNSTILE WITH 3 SECTIONS

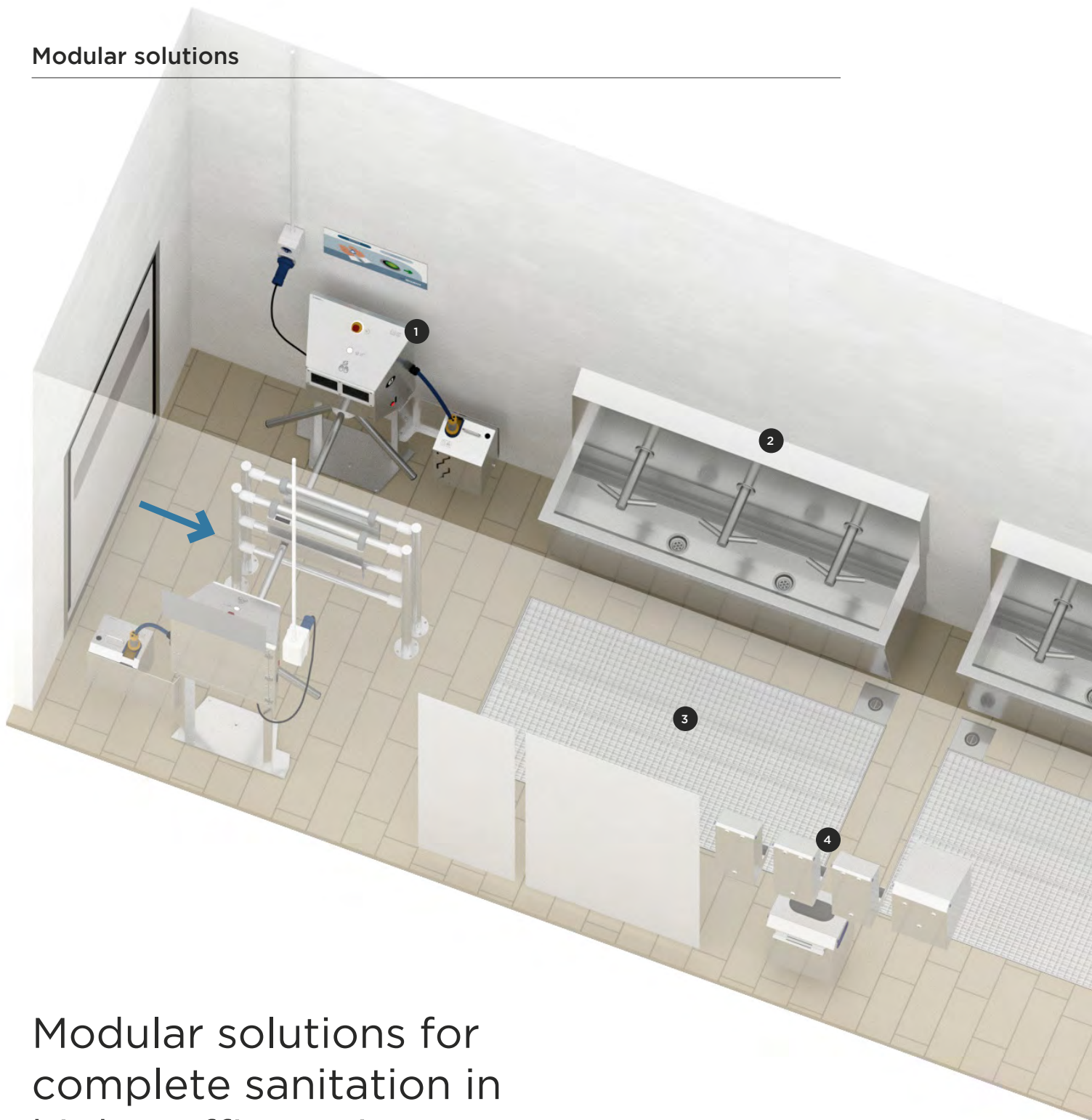
Bidirectional electromechanical



VERTICAL TURNSTILE WITH 4 SECTIONS

Bidirectional electromechanical





Modular solutions for complete sanitation in high-traffic environments

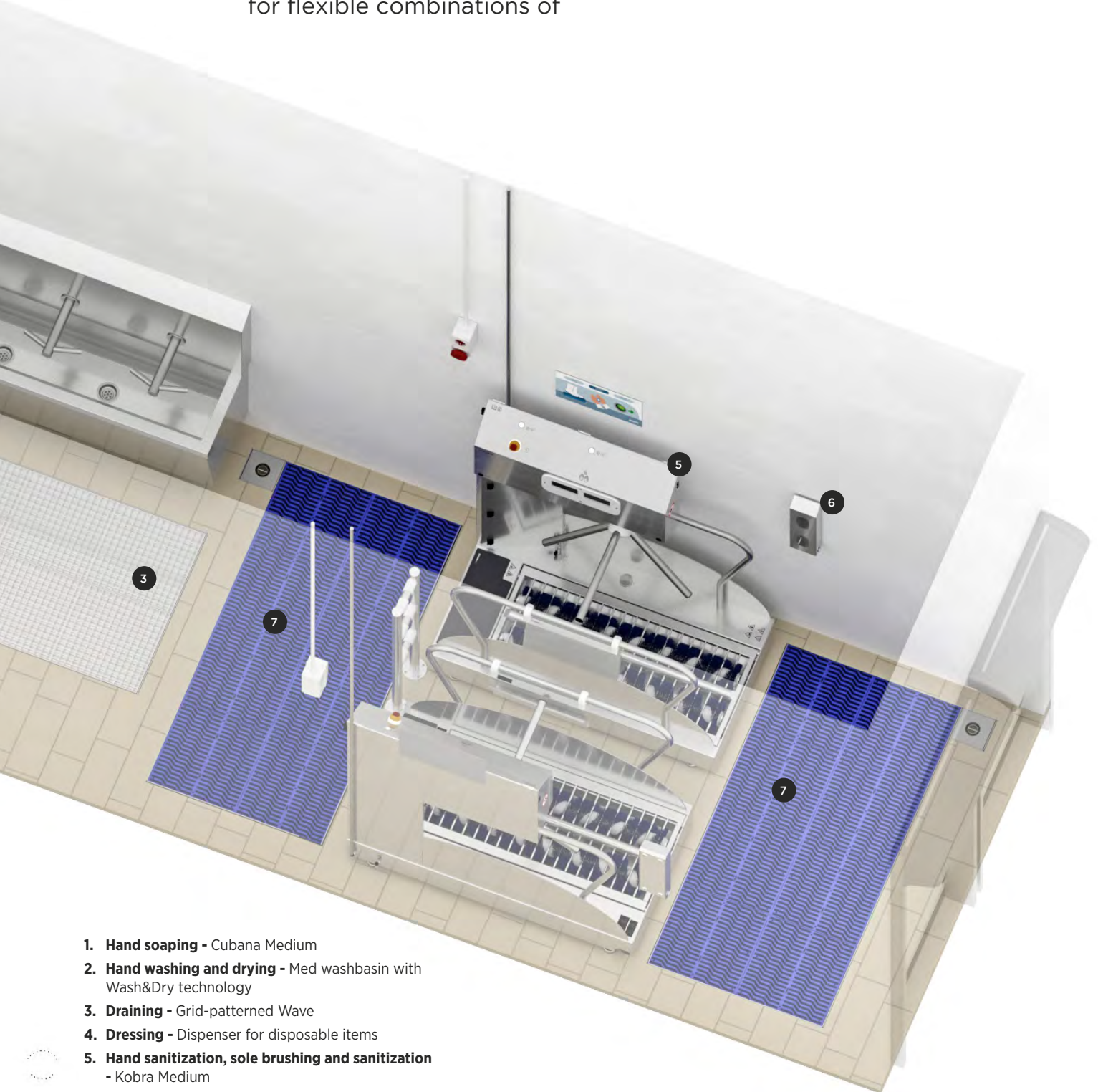
Modular sanitation solutions are ideal for **high-traffic areas**, where the effectiveness of disinfection depends on the integration of machines designed

to meet various hygiene needs, based on the number of operators and the specific dynamics of the department.

Each machine integrates seamlessly into a flow that optimizes safety, reduces wait times, and adapts to real-time operational needs.

This modular configuration allows for flexible combinations of

machines, ensuring **high hygiene standards, continuous protection, and effective management of operational flows** for both operators and the environment.



1. **Hand soaping** - Cubana Medium
2. **Hand washing and drying** - Med washbasin with Wash&Dry technology
3. **Draining** - Grid-patterned Wave
4. **Dressing** - Dispenser for disposable items
5. **Hand sanitization, sole brushing and sanitization** - Kobra Medium
6. **Glove wearing** - Dispenser
7. **Draining** - Wave Carpet

Advanced filtration. Air showers, against impurities.

These represent highly efficient standalone solutions, designed for the removal of contaminating particles present on clothing and surfaces during the passage of personnel and goods between areas with different contamination levels.

Also available in a water-based version with disinfectant solution.



PEDESTRIAN AIR SHOWER

Lateral suction and blowing

Filtration efficiency: G4 + H14

Filtered air jets: 25 m/s

I 1.400 - w 1.200 - h 2.796 mm - 380 V



The nozzles, individually adjustable, are positioned on the ceiling and in the vertical corners, ensuring intersecting air trajectories. Made with self-supporting double-wall panels in painted sheet metal or AISI 304L stainless steel.



Silver decontaminating carpet version



Vacuum floor version

PASSBOX

Dry sanitization with UV lamp for product decontamination, including food products (the product can come into contact with the lamp)
Customizable dimensions



Air curtains generate a flow that, directed downward, creates a separation between the internal and external volumes of the rooms.

GREY BLADE

Pedestrian entrances

Air curtain with a front suction panel in satin-finished aluminum, adjustable fins to direct the air stream, air intake grille, and two tangential fans in thermoplastic resin.

Available sizes: 1000/1500/2000 mm



WHITE BLADE

Pedestrian entrances

Air curtain with top suction, centrifugal fan with speed controller available as an option. Suitable for internal pedestrian entrances in production areas.

Available sizes: 1000/1500/2000 mm



VENTUS BLADE

Large entrances

Air curtain with front suction for high airflow, featuring a centrifugal fan, suitable for large entrances of industries and warehouses. The airflow with static speed is controlled through the adjustable fins underneath. Also available in stainless steel version.

Available sizes: 1000/1500 mm



VENTUS BLADE IN ACCIAIO INOX

Large entrances

With the same technical features as the standard version, stainless steel offers corrosion resistance and ease of maintenance, making it ideal for humid or harsh environments.

Available sizes: 1000/1500 mm

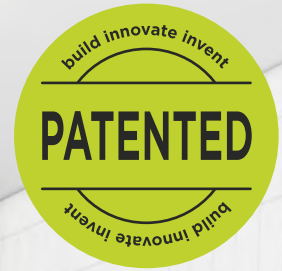


Maximum safety and efficiency.

Air curtains prevent dust or insects
from entering the premises.
They allow for proper climate control,
resulting in significant energy savings.



WAVE



Designed to be effective and easy to clean.

The wave arrangement of the bristles ensures an efficient cleaning of soles and wheels, directing the dirt into the special collection slots. Its modular structure and convenient extraction keys make the Wave carpet very easy to disassemble and clean.



99,94%
EFFECTIVE

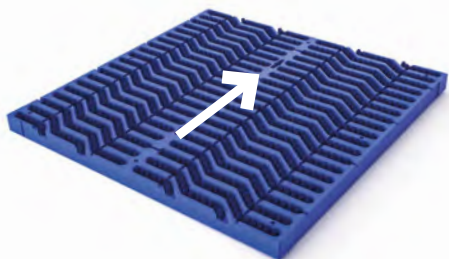
Reduction of bacterial loads.

Watch the demonstration video:

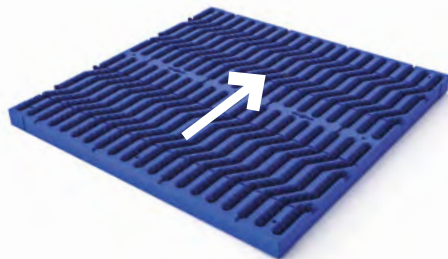


Patented sanitizing carpet for brushing and disinfecting soles and wheels of both small or large sizes

MODULES ARRANGEMENT



Direction for pedestrian use



Direction for use with trolley

TANK MATERIAL: AISI 304L stainless steel

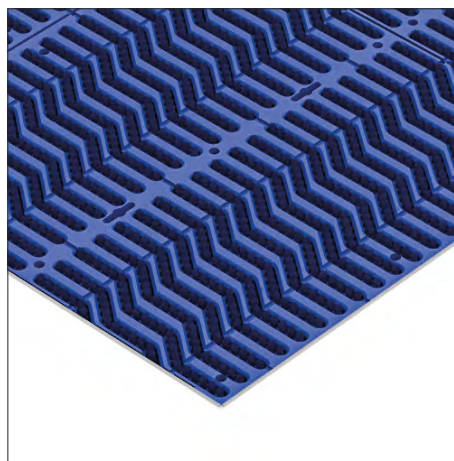
MATERIAL OF THE MODULE: POM C blue - blue nylon bristles Ø 0,5 mm

WEIGHT OF THE MODULE: 7,5 Kg

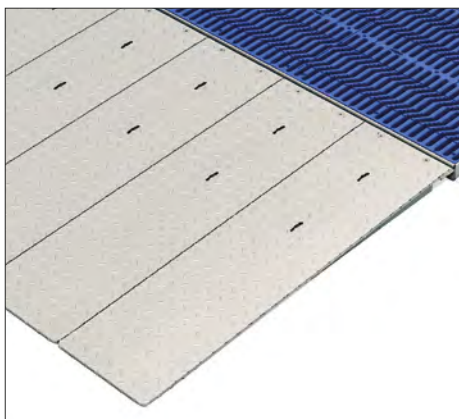
VERSIONS



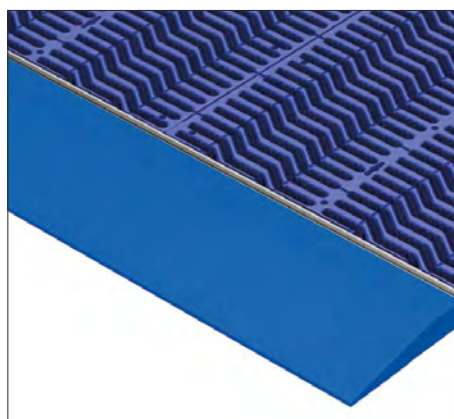
Wet version, for wheeled or pedestrian use, with an external siphoned pit, complete with an anti-intrusion gasket



Dry recessed for pedestrian or trolley use



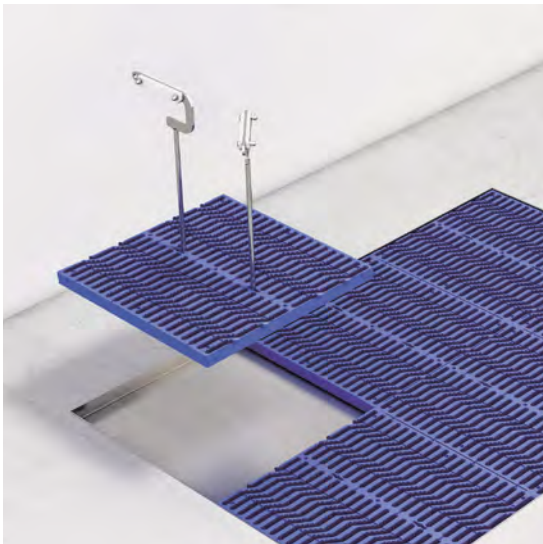
On surface with ramps, dry, for trolley use



On surface with ramps, dry, for pedestrian use

EXTRACTION KEYS

In AISI 304L stainless steel, for modules and ramps.



WAVE MODULES TROLLEY

Maintenance/replacement of Wave modules for routine cleaning

l 1.154 - w 540 - h 1.657 mm



ACCESSORIES AND DOSING KIT FOR THE WET VERSION

Made of AISI 304L stainless steel



- | | |
|-------------------------------------|--|
| 1. Casing containing the dosing kit | 4. 3/4" flexible hose and hose hanger |
| 2. 3/4" outlet valve | 5. Signage with user instructions |
| 3. 10L jerry can holder with lock | 6. Extraction keys with wall-mounted support |



1. Grid-patterned Wave

2. Wave carpet

3. Air curtain with protective cover

Protection and hygiene through a combined carpet system.

The combination of the **grid-patterned Wave**, placed outside, and the **Wave Carpet**, located inside, **offers a complete and highly effective solution** for entrance dirt control.

The grid-patterned Wave is ideal for the **initial rough cleaning**, capturing and **retaining larger debris** and preventing it from being carried inside. Once this first barrier is crossed, the **Wave**

Carpet comes into play with its **effective brushing action**, removing **dust and residual dirt** while also allowing for **optimal sole sanitisation**.

This configuration is particularly recommended for **entrances from outdoor areas**, where **deep and consistent cleaning** is essential, helping to maintain a **more hygienic and safer environment** over time.

PRESSED GRID-PATTERNED MODULE

Made of AISI 304 stainless steel, for pedestrian and trolley use, non-slip
l 457 - w 457 - h 30 mm



Silver

CARRELLABILE



Highly effective bactericidal combo.

Decontaminant carpet designed for dry environments, featuring silver ions and Biomaster coating. It possesses antistatic properties, provides a non-slip surface, and is easy to clean. The stainless steel plate on which the Silver carpet is mounted can be placed on the ground for pedestrian use or securely fixed to the floor using screws if it is intended for use with a trolley.

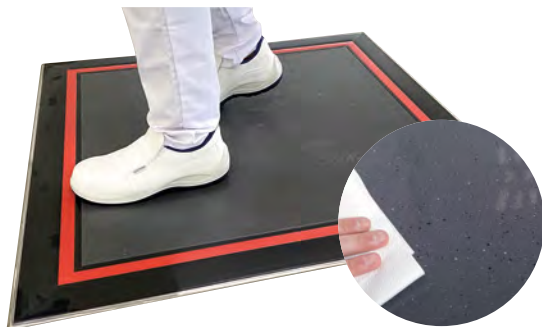


99,9%
EFFECTIVE

Reduction of bacterial loads.
Tested against E.Coli, Salmonella and MRSA.

SILVER PEDESTRIAN

With or without stainless steel plate. Silver ions carpet for dry environments, optionally supported by a 304L stainless steel sheet. Decontaminating, easy to clean, and antistatic coating.



SHEET ADHESIVE

Adhesive sheet carpet, anti-static. It captures all types of bacterial particles, dust, and residue from soles.



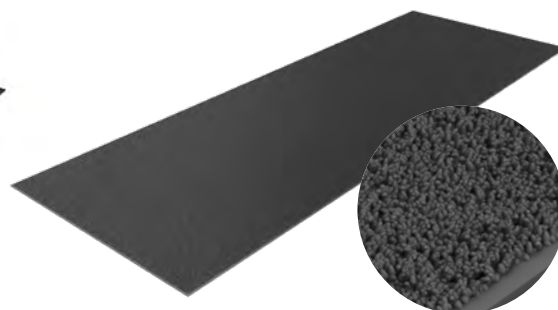
SANITIZER AND FOOTSTEP DRYER

The Saniwork sponge is capable of maintaining the action of the applied solution over time. The footstep dryer made of polyamide is capable of drying the sole.



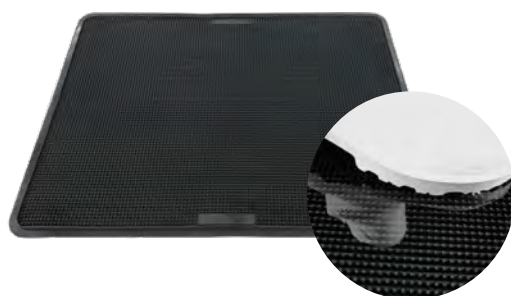
DRY

Ideal for drying. The heat-resistant weave, durable against impacts and pressure, provides superior retention, allowing dirt to filter into the carpet without remaining on the surface.



IMMERSION

Disinfecting carpet for immersion. The rubber bends under the weight of the person, and the sole is immersed in the disinfectant solution. Thousands of protrusions ensure the immediate cleaning of the soles.



MAGNETIC

Magnetic decontaminating carpet for access to critical areas. It captures residues, fragments, chips, and metallic shavings from shoe soles or cart wheels.



Multi-purpose columns

All products are also
available in versions
with photocell
dispenser.

SANIMAN

Dispenser for sanitizing solution dispensing
Elbow activation

l 500 - w 375 - h 1.510 mm



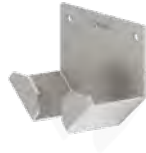
TOTALSAN

Dispenser for sanitizing solution dispensing with elbow activation
Sole sanitization with silver ion carpet

l 1.000 - w 800 - h 1.510 mm



VACUUM GAUGE
SUPPORT



HAMMER SUPPORT



ADHESIVE TAPE
SUPPORT



SAMPLE HOLDER



CONTAINER HOLDER



CALIPER SUPPORT



THERMOMETER
SUPPORT



DOCUMENT HOLDER



TOOL HOLDER



Design dispenser: elegance and practicality for disposable clothing.

Blending style and functionality: crafted from 2 mm thick stainless steel with an anti-cut finish. The perfect combination.



POLY

l 215 - w 205 - h 579 mm - Capacity 13 L

- Caps
- Earplugs
- Shoe-covers
- Oversleeves
- Beard Covers



PLEXY

l 299 - w 338 - h 498 mm - Capacity 28 L

- Burka
- Coveralls
- Long boot covers
- Caps
- Earplugs
- Shoe-covers
- Oversleeves
- Masks
- Beard Covers



MASKS

Maximum box size: l 104 - w 83 - h 205 mm

l 231 - w 94 - h 506 mm

l 129 - w 94 - h 286 mm



GOWNS

l 299 - w 338 - h 498 mm - Capacity 28 L



GLOVES

Maximum box size: l 126 - w 68 - h 218 mm

l 245 - w 78 - h 595 mm

l 152 - w 79 - h 514 mm

l 151 - w 79 - h 300 mm

l 130 - w 79 - h 252 mm



PAPER

Paper roll

Horizontal

l 325 - w 284 - h 385 mm



Vertical with pre-cut

l 245 - w 230 - h 344 mm



CUSTOM SELF-SUPPORTING COLUMN

Mobile columns, complete with dispensers, ideal for areas where wall mounting is not possible, available in trolley version



HANGING BINS

l 365 - w 320 - h 712 mm - 58 L



l 365 - w 319 - h 472 mm - 36 L



l 267 - w 267 - h 455 mm - 20 L



CUSTOM SELF-SUPPORTING COLUMNS

Mobile columns, complete with dispensers, ideal for locations where wall mounting is not possible.



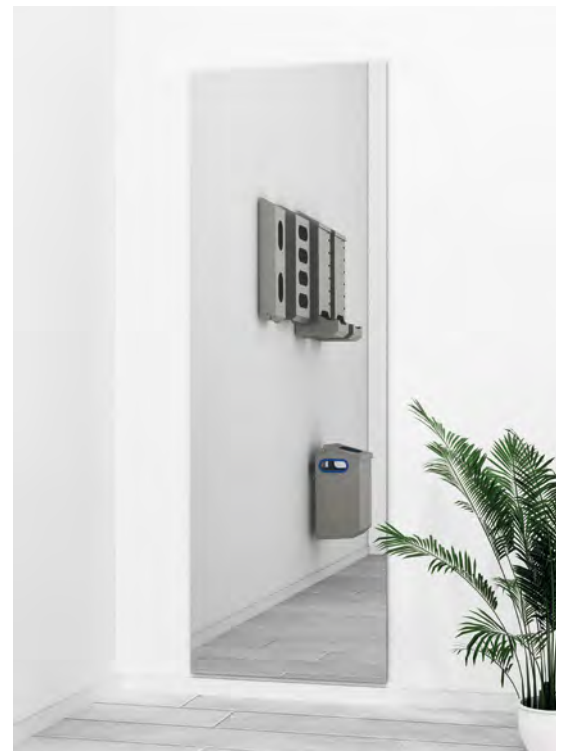
CLOTHING SIGNAGE

Customizable with required garments and company logo.



MIRRORED STAINLESS STEEL SHEET

Custom-made



BINS WITH WHEELS

Stainless steel - pedal opening - 110 L



Stainless steel - pedal opening -
swivel wheels Ø 60 mm
Ø 380 mm - h 850 mm



Stainless steel - for continuous
bag with wheels and brake



BASKOZ BINS

Waste container with integrated sanitation system,
featuring UV lamp and ozone generator, waterproof

I 510 - w 580 - h 1.100 mm I 850 - w 580 - h 1.100 mm



WALL-MOUNTED BIN

Bag holder with spring, wall mounting, and
anti-release and anti-theft key system
Made of AISI 304 stainless steel - 35 L

I 300 - w 250 - h 520 mm



APRONS

Wall mounted apron rack with 5 hooks
l 490 - w 80 - h 97 mm



For tear-off aprons
l 150 - w 107 - h 83 mm



Roll dispenser
l 474 - w 157 - h 250 mm



ROLL-UP DOORS AND GATES

Customizable



ADHESIVE OR LED SIGNAGE


Customizable



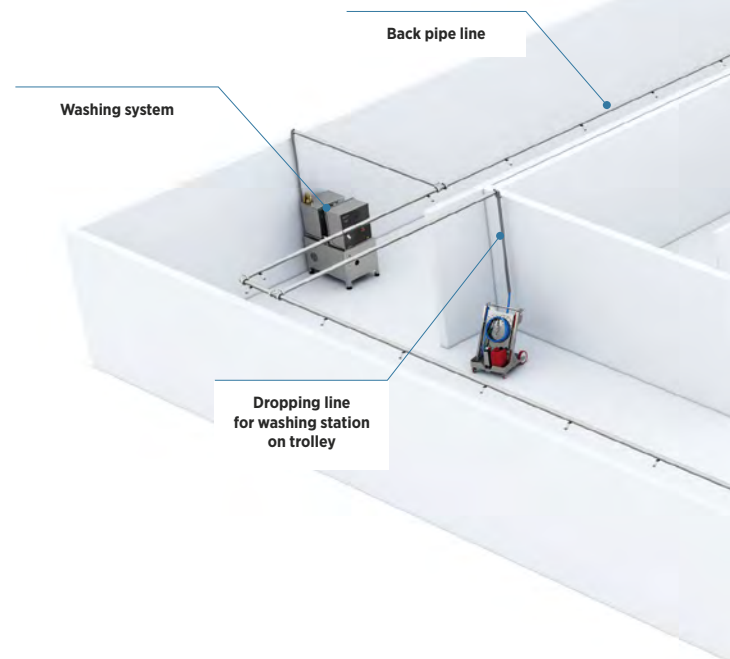




Work
Peacefully



2 — Washing systems



Advanced solutions for industrial hygiene

Multi-pressure centralized washing systems represent a highly efficient solution for cleaning and sanitizing production areas, with a special focus on the food industry. These systems are designed to optimize washing times, reduce water, chemical, and electricity consumption, and keep maintenance costs under control.

FEATURES AND BENEFITS

The system is powered by a centralized pressurization system, which distributes water at a **controlled temperature and pressure** throughout the production area via dedicated pipelines. Operators can efficiently carry out **pre-washing, foaming, and rinsing** operations using a range of Borin Line accessories. Designed for seamless integration with automatic or semi-automatic

systems, this solution reduces washing times and labor costs, allowing the Client to enhance overall productivity. The Multiflow system not only ensures standard sanitization processes but also **enables deep cleaning operations**, with the ability to easily adjust pressure and washing temperatures via display, adapting to different operational needs.

SAVINGS



Water



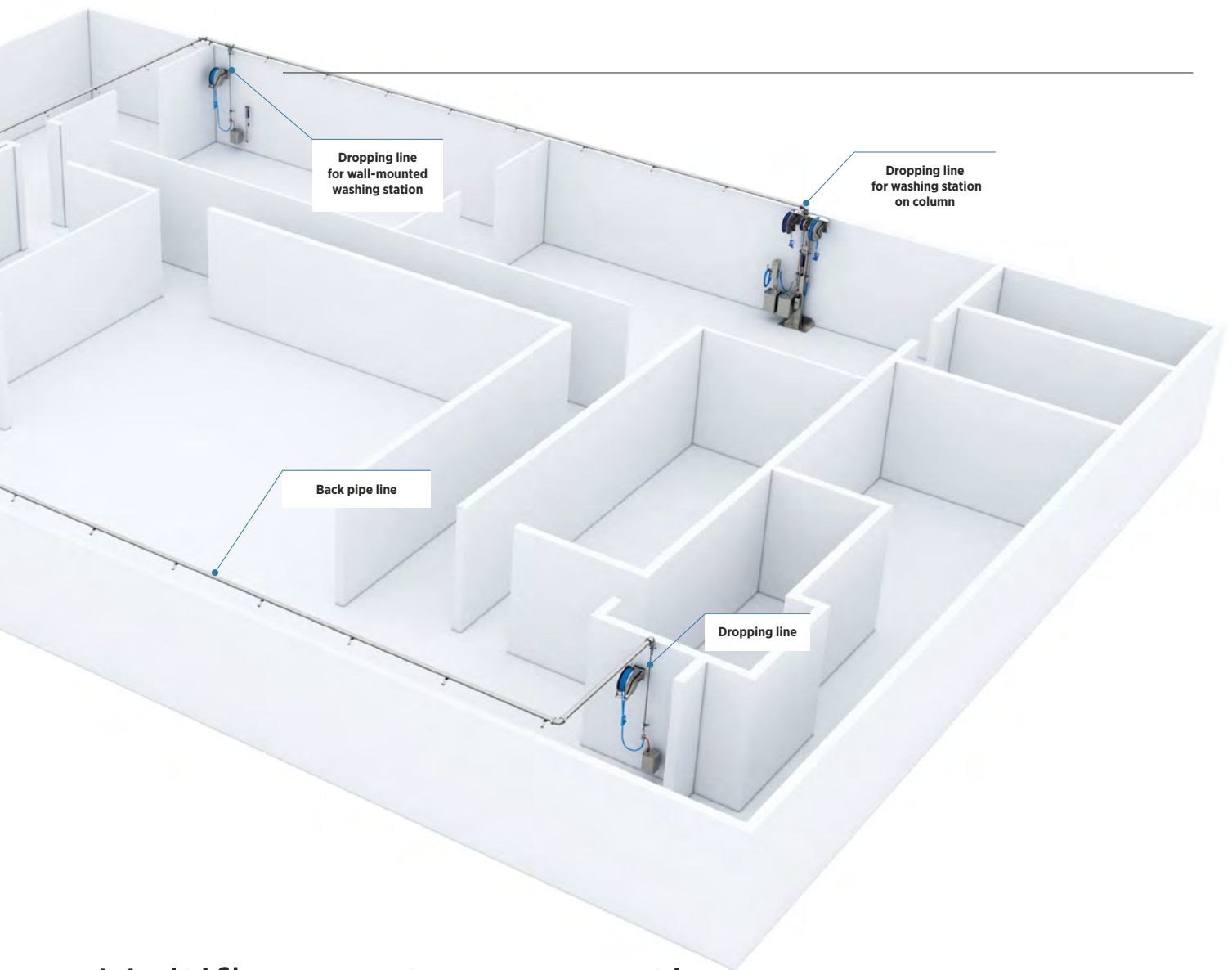
Electricity



Chemicals



Labor



Multiflow system operation

The Multiflow system consists of:

1. PRESSURIZATION UNIT

Located in a technical room, the unit is sized according to water demand, meaning the number of operators using the system simultaneously. On average, each operator requires approximately 25 L/min of water for effective cleaning. The unit includes a mixing tank to ensure a constant temperature and oversized pumps **powered by Brushless motors controlled by inverters**, optimizing energy consumption and ensuring maximum system reliability.

2. DISTRIBUTION SYSTEM

Water is distributed through a main pipeline, typically installed in the ceiling area, which connects the various dropping lines for washing stations across different sections of the facility.

Watch the demonstration video:





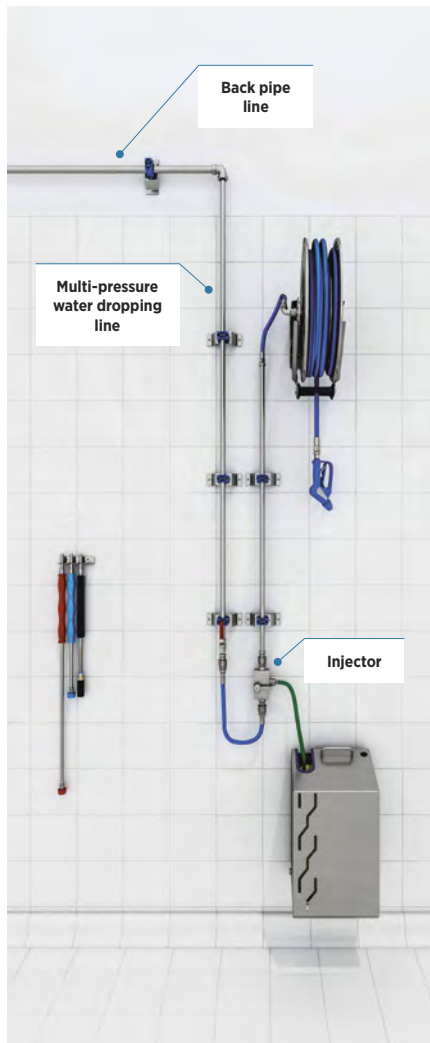
3. WASHING STATIONS

The stations are designed to meet specific operational needs and the characteristics of each department. Available solutions include:

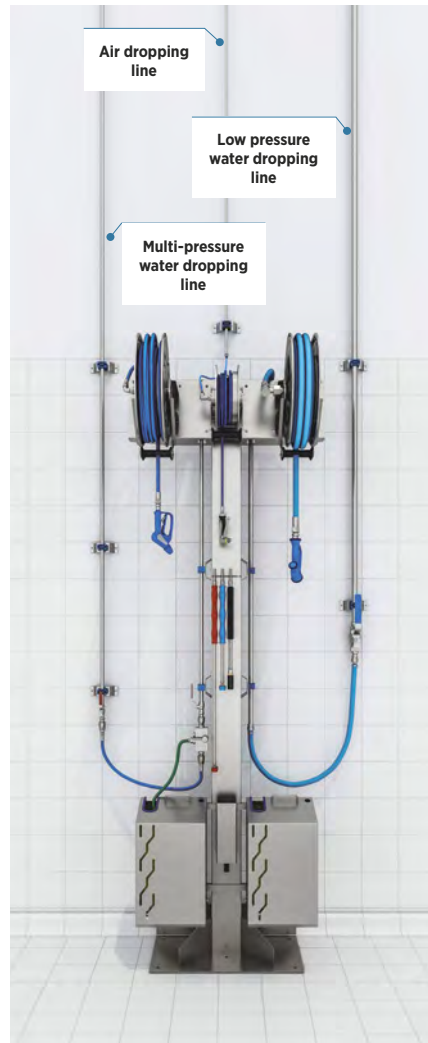
- **Wall-mounted fixed station**
Ideal for **compact spaces** and **frequent washing operations**. The wall-mounted hose reel allows for quick rewinding, optimizing workflow. It can dispense one or two chemicals, with or without compressed air. The stainless steel jerry can holders are equipped with tamper-proof locks to prevent direct operator contact with detergents.
- **Column-mounted fixed station**
When wall installation is not feasible (for example, due to structural obstacles), a column-mounted station is an alternative solution.
- **Mobile washing station**
The Kiteco mobile station is a **highly hygienic** solution, as it allows the cart to be moved out of the production area after each washing cycle. The cart is equipped with lances for pre-washing, rinsing, foaming, and disinfection. Kiteco stations can also be **customized with color-coded parts** to prevent cross-contamination.

All these solutions can be easily integrated with existing systems, ensuring a quick and seamless implementation at the Client's facility.

BACKPIPES AND DROPPING LINES



Wall-mounted washing station



Washing station on column



Mobile washing station

High-pressure water piping, network pressure piping, and compressed air

Made of **AISI 304L or AISI 316 stainless steel**, they ensure the flow and pressure distribution of water across all indoor and outdoor areas of the facility. The pipes are equipped

with **fittings, clamps, anti-vibration expansion joints, brackets, and nuts and bolts**. The number of dropping lines can be independent of the water flow rate of the connected system.



MULTIFLOW

M A X I

Pressurization groups for washing systems.

Multiflow Maxi is designed for large-scale users and features a brushless engine with inverter control. Users can adjust both water pressure and temperature for routine departmental cleaning, giving them full control over these settings.

MULTIFLOW MAXI

170 l/min - From 30 to 100 bar - From 1 to 10 operators at the same time - Brushless engine
l 800 - w 1.200 - h 1.750 mm



MULTIFLOW MEDIUM

75 l/min - From 30 to 100 bar - From 1 to 4 operators at the same time - Brushless engine
l 590 - w 1.000 - h 1.250 mm



MULTIFLOW MINI

48 l/min - From 30 to 100 bar - From 1 to 2 operators at the same time - 2 asynchronous engines
l 700 - w 800 - h 1.750 mm



MULTIFLOW ECO

52 l/min - From 30 to 100 bar - From 1 to 2 operators at the same time - 2 asynchronous engines
l 780 - w 410 - h 1.210 mm



LOW PRESS

150 l/min - From 10 to 40 bar - From 1 to 7 operators at the same time - 2 multi-stage centrifugal pumps
l 816 - w 1280 - h 1700 mm



SINGLE PUMP

25 l/min - From 30 to 140 bar - 1 operator - asynchronous engine
l 670 - w 430 - h 510 mm



KITECO

Stazione di lavaggio carrellata

Hygiene on the move. Mobile stations optimize efficiency.

Intentionally designed to keep Production Departments free from permanent washing devices, this solution is outfitted with a certified and calibrated foam injector, rinse tank, hose reel, multi-pressure lances, and guns.

For instances where a centralized washing system is unavailable, it is also offered with a single pump onboard.



Corner bumpers
in colour code:



KITECO MOTOR Hose reel with crank and motor-pump

21 l/min - Multipressure
l 760 - w 850 - h 1.360 mm



KITECO MOTOR Hose hanger and motor-pump

21 l/min - Multipressure
l 760 - w 850 - h 1.103 mm



KITECO Hose reel with crank

Multipressure
l 760 - w 850 - h 1.360 mm



KITECO Hose hanger

Multipressure
l 760 - w 850 - h 1.103 mm



The maximum comfort is achieved by placing accessories within reach.

Our stainless steel column washing stations are fully equipped with a certified calibration foam injector, rinse tank, hose reels for high and low pressure and for compressed air, a tank-holder dispenser with lock, multi-pressure lances and guns.

They are also available with a motor-pump on board where a centralized washing system is not present.



TRIPLEX MOTOR COLUMN WITH DOSING KIT

Network pressure - compressed air - high
pressure with motor-pump system - dosing kit
l 1.730 - w 720 - h 3.000 mm



TRIPLEX MOTOR COLUMN

Network pressure - compressed air - high
pressure with motor-pump system
l 1.730 - w 720 - h 3.000 mm



DUPLEX MOTOR COLUMN

Network pressure - high pressure with motor-pump system

l 1.730 - w 720 - h 3.000 mm



SINGLE MOTOR COLUMN

High pressure with motor-pump system

l 1.730 - w 720 - h 3.000 mm



TRIPLEX COLUMN

Network pressure - high pressure - compressed air
l 1.730 - w 720 - h 3.000 mm



DUPLEX COLUMN

Network pressure - high pressure
l 1.730 - w 720 - h 3.000 mm



SINGLE COLUMN

High pressure
l 800 - w 720 - h 3.000 mm



SINGLE COLUMN

Network pressure
l 800 - w 700 - h 3.000 mm



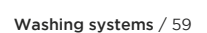
Washing room: organization, hygiene, and maximum efficiency.

We design advanced solutions for industrial washing environments, ensuring **hygiene, safety, and operational efficiency**.

We optimize workflow with areas equipped with **stainless steel sinks, industrial parts washers, arms with hydrokinetic heads, and Triplex columns** for water dispensing.

The entry and exit flows are regulated by **sectional roll-up doors with color coding**, while a **storage room with industrial shelving** ensures efficient material organization.

- 
1. **Manual washing** – Stainless steel sink
2. **Automatic washing system for mechanical components** – Industrial parts washer
3. **Water dispensing system** – Triplex column
4. **Automatic washing** – Arm with hydrokinetic head
5. **Storage of items** – Industrial shelving
6. **Water drainage** – Stainless steel floor drain channel
7. **Separation between dirty and clean zones** – Color-coded flooring
8. **Entrance and exit management** – Sectional roll-up doors with color coding
9. **Initial cleaning and sole and wheel sanitization upon entry** – Grid-patterned Wave
10. **Sole and wheel sanitization upon exit** – Wave carpet
11. **Filling and dosing of sanitizing product for wet carpets** – Dosing kit
12. **Vapor extraction** – Exhaust fan



CLEANJET

Guaranteed effectiveness and savings.

The sanitization of conveyor belts is a crucial aspect of food safety and industrial cleaning. We provide an effective solution for automating foaming and washing, ensuring uniform cleaning of the surfaces, and ensuring significant time and cost savings. These systems are also movable and easily adjustable, making them suitable for various types of conveyor belts.

SAVINGS



Water



Chemical



Labor



FRONT BELT WASHING DEVICE

Foaming function and top belt washing

Washing surface: 900 mm

l 1.175 - w 963 - h 1.373 mm



Posizionamento

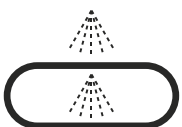


SIDE BELT WASHING DEVICE

Foaming function and top and bottom belt washing

Washing surface: 1.000 mm

l 1.830 - w 740 - h 1.600 mm



Posizionamento



Discover the peace of mind that comes with having the ideal washing solutions for heavy vehicles — thanks to our custom-designed wash bays.

We design custom wash bays for heavy vehicles, engineered to ensure effective cleaning in four stages: pre-wash, foaming, rinsing, and disinfection.

Equipped with stainless steel spring -or

saddle-mounted hose reels, our wash bays offer outstanding durability and resistance over time.

Optimize your washing operations with high-quality solution.

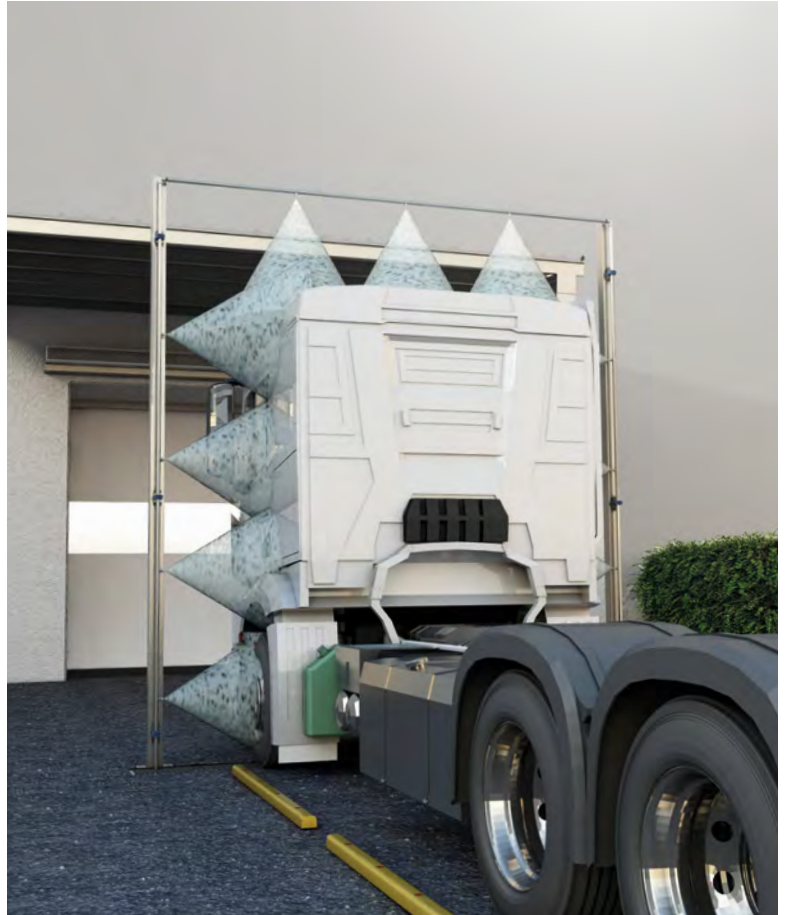
PISTE DI LAVAGGIO





Our systems offer significant savings in water, chemicals, and energy, ensuring efficient and sustainable management.

Thorough disinfection even for large vehicles.



DISINFECTION SYSTEMS

For the complete cleaning of heavy vehicles, we design and manufacture customized disinfection systems, equipped with disinfection arches and optional undercarriage disinfection, ideal for ensuring maximum hygiene at the entrance and exit of companies.

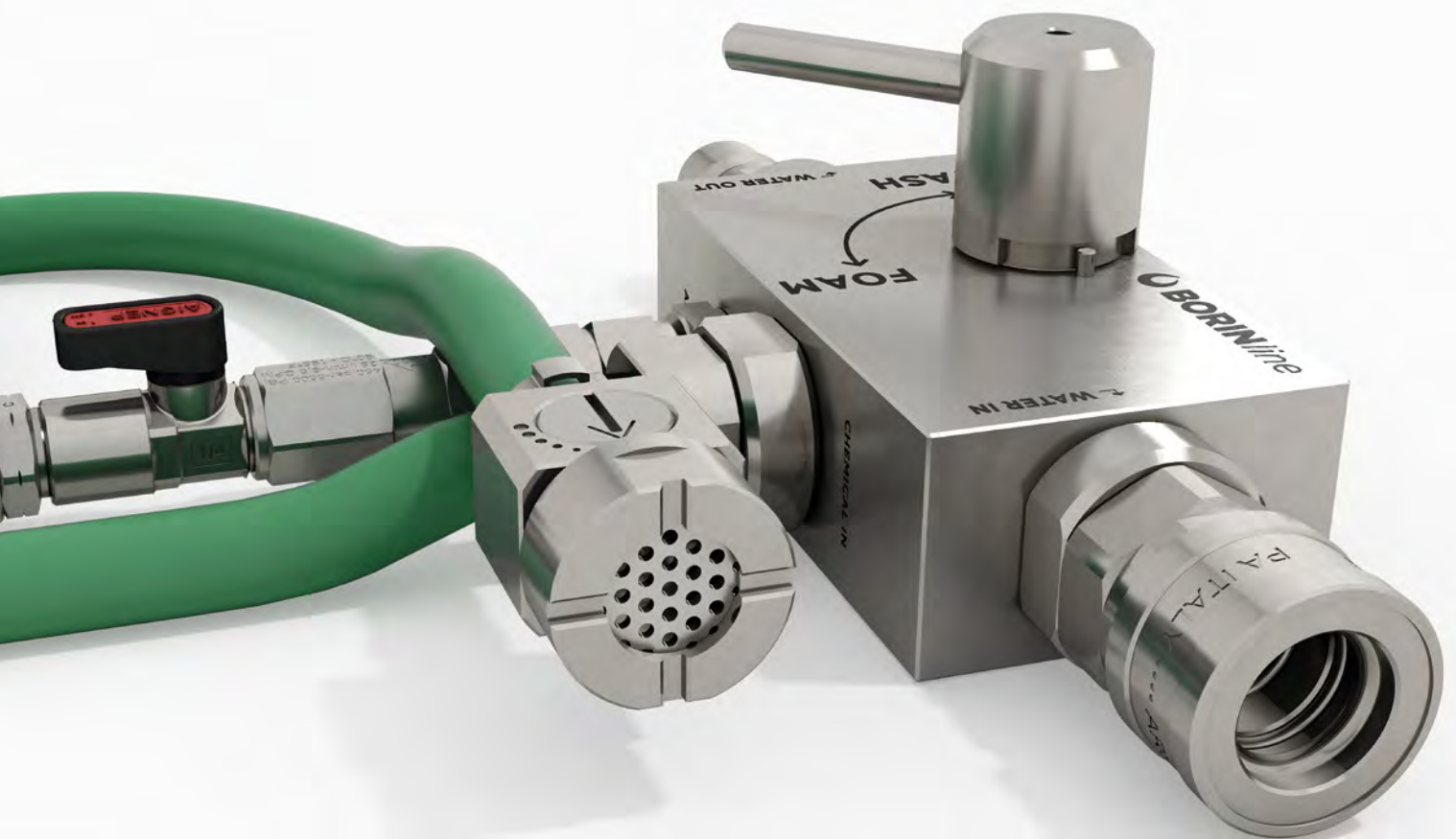


Highly engineered foaming injector.

Constructed entirely from AISI 316L stainless steel, including a PEEK bypass for rinsing, our systems are available in two configurations: with compressed air (air) and without compressed air (no air).

These systems are designed to handle alkaline, acidic, chlorinated, and peroxide detergents and disinfectants without incurring internal corrosion, ensuring long-lasting durability. They are built to maintain the desired calibration settings over time.

The product percentage can be adjusted to ensure compliance with BRC and IFS certifications, with certified calibration adjustments ranging from 1% to 5%.



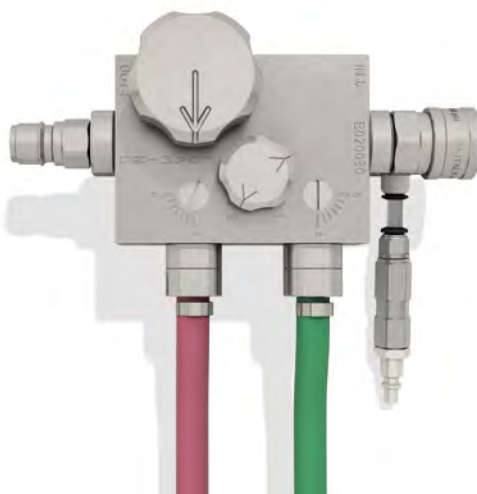
INJECTOR - 1 PRODUCT

With/without compressed air



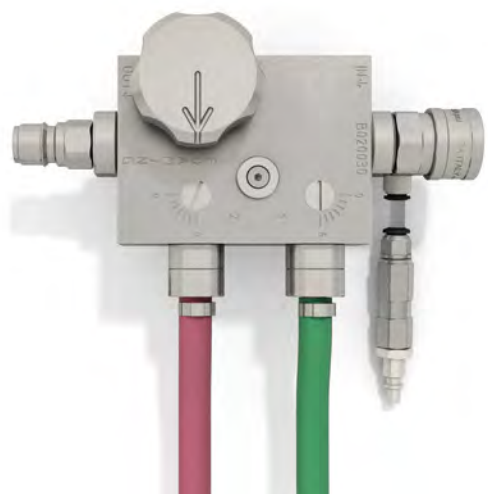
INJECTOR - 2 PRODUCTS WITH SWITCH

With/without compressed air



INJECTOR - 2 PRODUCTS AT THE SAME TIME

With/without compressed air



LONG POWER

For long-distance washing



FOAM LANCE

With/without compressed air



LANCES AND GUNS

Color coded



Color codes
supports:



WALL-MOUNTED REEL

For water and compressed air



HOSE HANGER



PIPE DRAIN PROBE

For foaming and washing pipes
and drains



FILTERS 3/7 CARTRIDGES

For the purification of water supplied
to washing systems - 40 inches



JERRY CAN HOLDER 5/10/25 L

with lock

l 267 - w 222 - h 425 mm

l 342 - w 290 - h 590 mm



HOODED LANCE FOR SURFACES

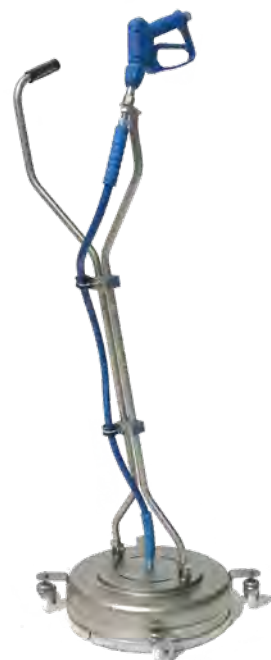
For washing tables and conveyor belts



Hooded structures to avoid splashes and
limit nebulization

HOODED LANCE FOR FLOORS

For washing floors, ducts and wells





MULTIFLOW

INTELLIGENT COLLECTORS

Automated washing systems.

These electro-pneumatic washing systems ensure homogeneous and perfect hygiene of surfaces.

The process takes place with complete safety and autonomy, without the need for operator presence.

They offer significant savings in chemicals and water, thanks to certified calibration accessories. Our strength lies in customizing the project based on the specific requirements of the operation.

Procedure

- Defrosting and pre-washing of the battery and conveyor belt with water at a maximum temperature of 80°C
- Foaming with an alkaline product on the battery and conveyor belt
- Rinsing of both
- Sanitizing of the surfaces
- Drying of both with compressed air and purging of the pipes

SAVINGS



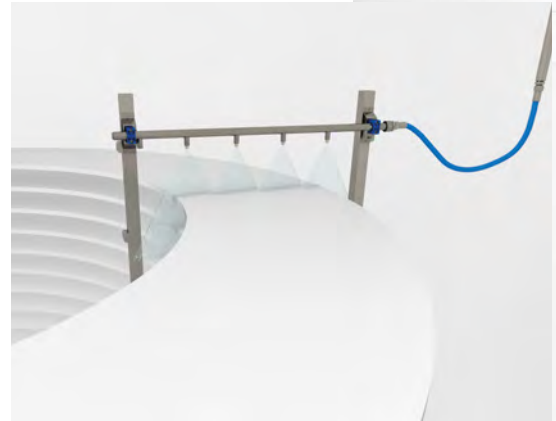
Water



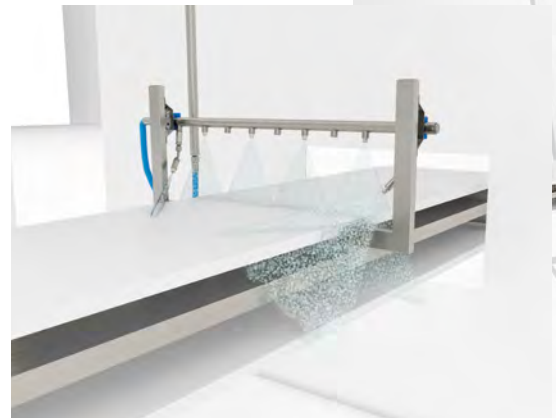
Chemical



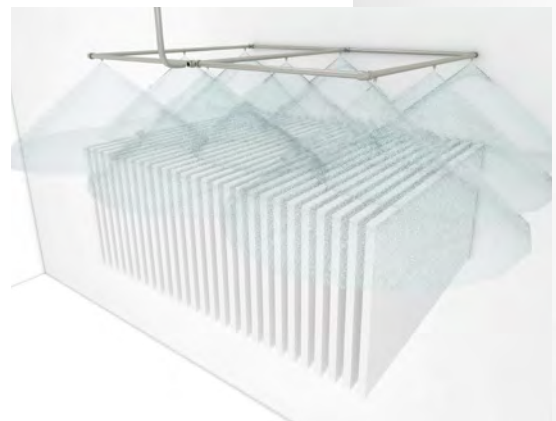
Labor



Upper conveyor belt



Lower conveyor belt



Cooling battery



Intelligent Collectors Application
for a scrubber tunnel





3— Premises furnishing



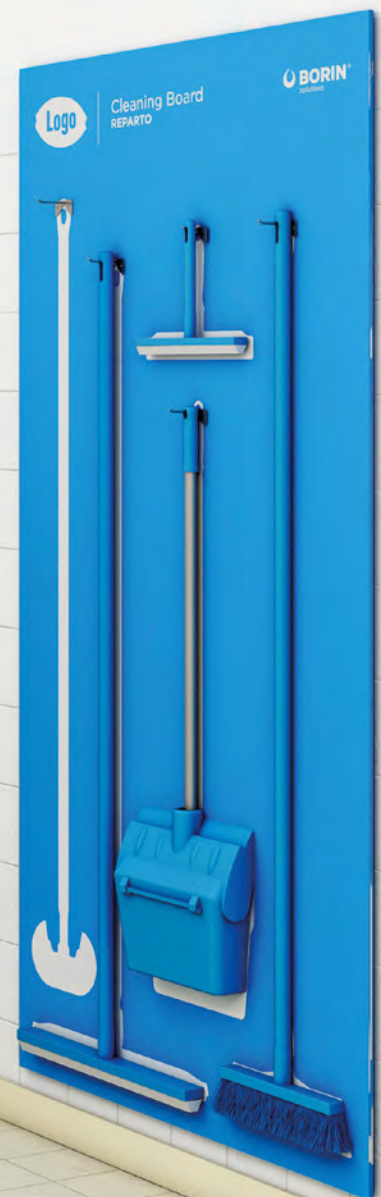
Work
Peacefully

Med

Industrial
steel
sink

Design and versatility in a single
configurable sink.

Fully welded and engineered with folds, featuring splash protection to contain bacterial loads. Additionally, it comes with a removable front panel for easy installation and maintenance, and a spacious back for attaching accessories like taps, soap dispensers, and towels.



The definitive solution for a hygienic and practical sink.



SINGLE

l 600 - w 580 - h 1.274 mm



DOUBLE

l 1.200 - w 580 - h 1.274 mm



TRIPLE

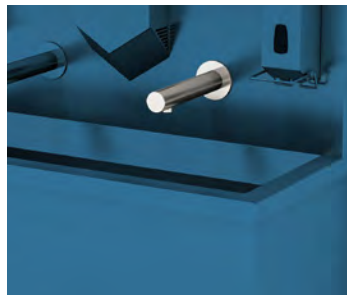
l 1.800 - w 580 - h 1.274 mm

WATER DISPENSING SYSTEM



PUSH

Button actuation mechanism
activated by knee press



PHOTOCELL

Actuation via photocell system



WASH AND DRY

Actuation via photocell system and
hand drying with Dyson technology

GROUND INSTALLATION



LEGS AND FEET

Recommended if the rear wall
is not load-bearing
h 229 mm

ACCESSORIES



DISPENSER

Soap and sanitizing
solution



DISPENSER

Paper towel



HAND DRYER

Dyson Airblade V

Sinks and washbasins

Available with
feet in case the
rear wall is not
load-bearing

MED SINGLE

Floor mounted/wall mounted
l 600 - w 580 - h 1.274 mm



MED DOUBLE

Floor mounted/wall mounted
l 1.200 - w 580 - h 1.274 mm



MED TRIPLE

Floor mounted/wall mounted
l 1.800 - w 580 - h 1.274 mm



Available with
air dryer (Dyson
technology) or paper
towel dispenser



MED SINGLE

Floor mounted/wall mounted
l 600 - w 580 - h 1.274 mm



MED DOUBLE

Floor mounted/wall mounted
l 1.200 - w 580 - h 1.274 mm



MED TRIPLE

Floor mounted/wall mounted
l 1.800 - w 580 - h 1.274 mm



Sinks and washbasins

Water dispensing via knee button

Available with
air dryer (Dyson
technology) or
paper towel

MED SINGLE PUSH

Floor mounted/wall mounted
l 600 - w 580 - h 1.274 mm



MED DOUBLE PUSH

Floor mounted/wall mounted
l 1.200 - w 580 - h 1.274 mm



MED TRIPLE PUSH

Floor mounted/wall mounted
l 1.800 - w 580 - h 1.274 mm



SINGLE PUSH

Semicircular shape - l 480 - w 360 - h 520 mm
Backsplash: 40 mm



DOUBLE PUSH

l 1.040 - w 520 - h 220 mm
Backsplash: 200 mm



TRIPLE PUSH

l 1.440 - w 520 - h 280 mm
Backsplash: 200 mm



Sinks and washbasins

SINGLE SINK

With Cabinet - l 700 - w 700 - h 900 mm
Rear splashback 400 mm



SINGLE SINK WITH DRAINING BOARD

With countertop, with cabinet - l 1.200 - w 700 - h 900+100 mm
Backsplash: 400 mm



DOUBLE SINK

With Cabinet - l 1.600 - w 700 - h 900+100 mm
Backsplash: 400 mm



DOUBLE SINK WITH DRAINING BOARD

With countertop, with cabinet
l 2.000 - w 600 - h 850 mm
Backsplash: 100 mm



LARGE SINK

With Cabinet - l 1.600 - w 700 - h 900+100 mm

Backsplash: 300 mm

Also available with a removable drip tray



ECO STATION BASE

Wall mounted - semicircular push sink



ECO STATION PLUS WITH PUSH

Wall-mounted - push sink with integrated dispensers



ECO STATION PLUS WITH PHOTOCELL

Wall-mounted - sink with automatic water dispensing via photocell and integrated dispensers



Sinks and washbasins

Corian washbasins with customizable raised edge, removable drain, and 10 cm channel. Non-porous surface that prevents bacteria, ensuring hygiene and easy cleaning.

CORIAN SINGLE

Washbasin | 600 - w 500 - h 350 mm



CORIAN DOUBLE

Sink | 1.200 - w 500 - h 350 mm



CORIAN TRIPLE

Sink | 1.800 - w 500 - h 350 mm



The sloped surface facilitates the water flow towards the drain. This design, along with the Corian material, reduces the risk of bacterial growth and unpleasant odors, making regular cleaning easier.

MULTIFUNCTION MIRROR

I 600 - w 800 mm - With integrated soap, air and water dispensers



Dyson Technology

In our equipment, we integrate Dyson air dryers, synonymous with innovation and quality. The perfect drying experience, thanks to our successful collaboration.

Dyson dryers are globally certified as hygienic by HACCP International.

The HEPA filters capture 99.95% of bacteria.



AIRBLADE V

Fast Drying

Thanks to the redesign of the motor and airflow, the Dyson Airblade V hand dryer is quieter than ever, yet dries hands in just 12 seconds.



AIRBLADE 9KJ

Dries hands in just 10 seconds

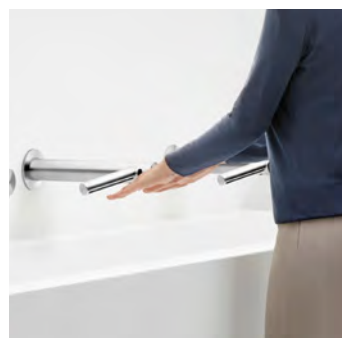
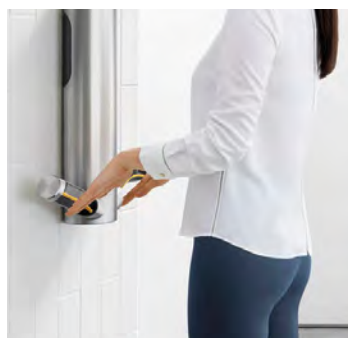
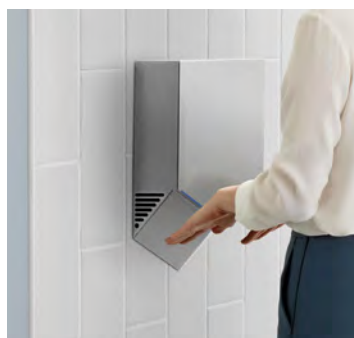
Two 0.45 mm curved slits create air blades at 624 km/h that follow the contours of the hands, removing more water in less time.



AIRBLADE WASH+DRY

No contact, no hassle

Wash and dry your hands directly at the sink. The Dyson Airblade Wash+Dry automatically switches from water to air, so there's no need to touch dirty taps or buttons.



dyson BORIN - Authorized distributor in Italy



dyson airblade

Only a Dyson dries like a Dyson

Safe, hygienic, and independently tested.
No contact. HEPA filter. No paper waste..

Lockers: Durable HPL Furniture

HPL lockers and benches are ideal for high-traffic changing rooms. Resistant to impacts, humidity, and scratches, they offer long-lasting durability and require minimal maintenance.

The non-porous surface ensures hygiene and ease of cleaning. With a 12-year warranty, they represent a reliable and high-quality solution.



Available in the following colors:



HPL, 12-year warranty

FOR STAFF

Dirty and clean clothing separation
I 500 - w 500 - h 2.250 mm



I 800 - w 500 - h 2.250 mm



I 1.200 - w 500 - h 2.250 mm



FOR STAFF

Stacked, with dirty and clean clothing separation
I 500 - w 500 - h 2.250 mm



FOR VISITORS

I 500 - w 500 - h 2.250 mm



HELMET RACK

I 800 - w 500 - h 2.250 mm



Lockers and accessories in color code

HPL, 12-year warranty

Available in the following colors:



SHELF CABINET

l 1.000 - w 500 - h 2.250 mm



APRON CABINET

l 1.000 - w 500 - h 2.250 mm



BROOM CABINET

With shelves for equipment
l 1.000 - w 500 - h 2.250 mm



ZEBRA BENCH IN COLOR CODE

Aluminium



LUXURY BENCH IN COLOR CODE

HPL seat and stainless steel base



SWING DOOR FOR STERILE ENVIRONMENTS

In aluminum and HPL with high-resistance panel



OVERHEAD BENCH

In HPL with integrated lockers



OVERHEAD BENCH

In stainless steel



Prevention and protection: the dressing process in the cleanroom

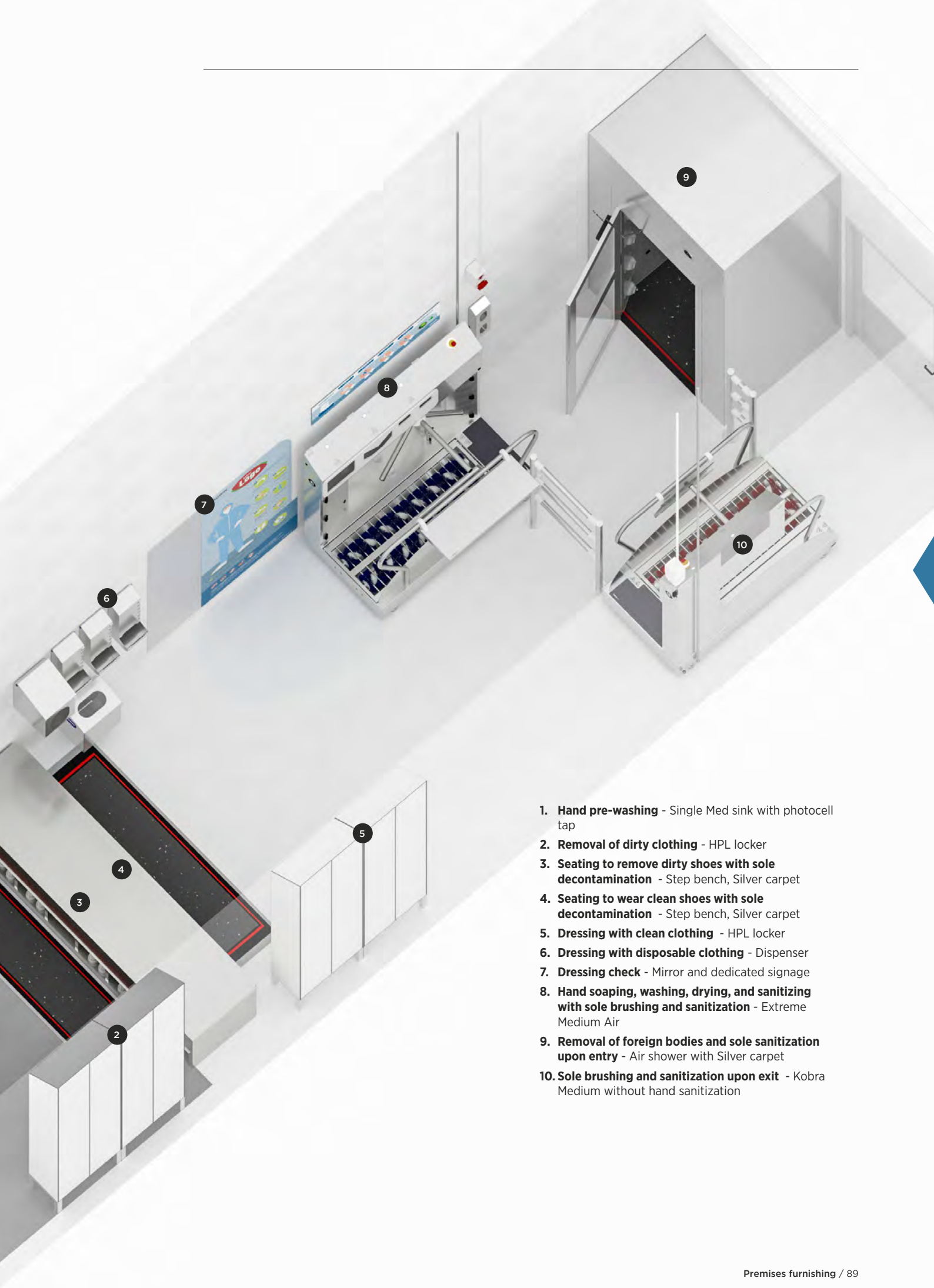
The filter area ensures **hygiene and safety** before entering the cleanroom. The cabinets separate clean and dirty clothing, preventing contamination.

The **stainless steel step bench** allows operators to change protective clothing in a practical and safe way. The front and rear sections of the bench feature dedicated shoe openings: one side for dirty shoes and the other for clean ones, preventing any risk of contamination. The bench is durable, easy to clean, and facilitates movement between the two zones. At the foot of the bench, the **Silver carpets** further reduce the risk of shoe contamination

Dispensers for disposable clothing and dedicated signage guide the operators, while a stainless steel mirror allows for a final check.

Before entering the cleanroom, operators pass through the **Extreme Medium Air** sanitizing station for hand and shoe disinfection. Next, the **air shower with Silver carpet** removes foreign bodies and sanitizes the soles. Upon exit, the **Kobra Medium** shoe brush ensures cleaning without the need for further hand intervention.





1. **Hand pre-washing** - Single Med sink with photocell tap
2. **Removal of dirty clothing** - HPL locker
3. **Seating to remove dirty shoes with sole decontamination** - Step bench, Silver carpet
4. **Seating to wear clean shoes with sole decontamination** - Step bench, Silver carpet
5. **Dressing with clean clothing** - HPL locker
6. **Dressing with disposable clothing** - Dispenser
7. **Dressing check** - Mirror and dedicated signage
8. **Hand soaping, washing, drying, and sanitizing with sole brushing and sanitization** - Extreme Medium Air
9. **Removal of foreign bodies and sole sanitization upon entry** - Air shower with Silver carpet
10. **Sole brushing and sanitization upon exit** - Kobra Medium without hand sanitization

COMPUTER CABINET

Stainless steel

l 600 - w 500 - h 1.650 mm

+ 80 mm wheels



DESKS AND STOOLS

Stainless steel



DRINKING FOUNTAIN

Stainless steel – for production areas



TABLES

Stainless steel with polyethylene top, custom-made



TABLES

Stainless steel – with or without cabinets,
Custom-made



CABINETS

Stainless Steel – Custom-made



STAFF LOCKERS

Plastic-coated zinc – custom-made

Dirty/clean compartment separation



Durability, ergonomics, and modularity

The canteen is an environment where hygiene, order, and comfort are essential.

Our furniture offers the ideal solution for furnishing the space in a practical and functional way.



Available in the following colors:



HPL in color code

FOOD WARMER CABINET

l 600 - w 600 - h 2.223 mm



LOCKER UNIT

18 Compartments - l 900 - w 500 - h 2.250 mm



TABLES AND CHAIRS

For canteens



DOORS

Wind double swing door

Wind double swing door with porthole

Wind single swing door

Wind single swing door with porthole

Sliding door

Hinged door



CHAIR

made of polypropylene



STOOL

made of polypropylene



Available in the following colors:



SHELVES

Wall-mounted units in HPL – custom dimensions



ROUND TABLES

diam. 700 mm



Available in the following colors:



TABLES

HPL top and stainless steel structure



Efficiency, practicality, and comfort in an optimized space

The canteen area is reimagined as a solution that maximizes available space while ensuring order and easy cleaning. Furniture designed for practical, versatile use, enabling a modern and functional dining experience.



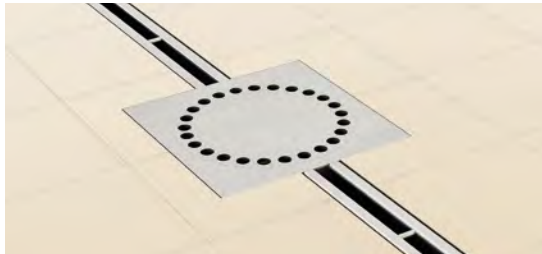


Water drainage systems

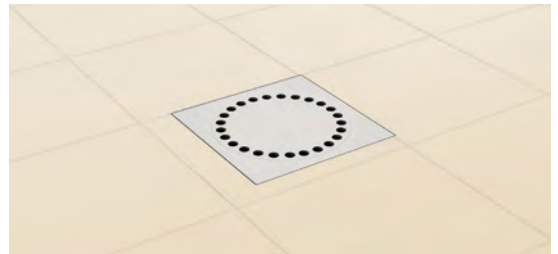
Drain channels and floor drains designed for installation in production areas, adaptable to the specific needs of any space. These components, featuring a clean and minimal design, are made of stainless steel and are fully inspectable for easy cleaning.

DRAINS AND DRAIN CHANNELS

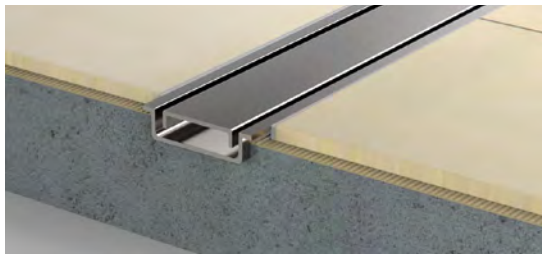
Total hygiene siphoned – Anti-intrusion kit with gasket – Customizable



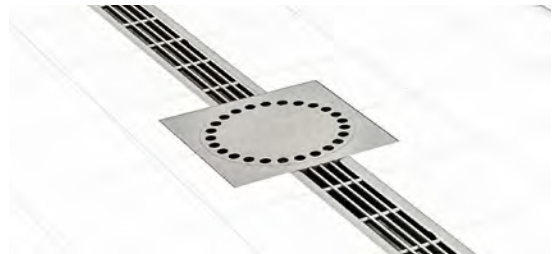
Drain Channels with drain for production areas



Siphoned drains for production areas



Drain channels for WCs and showers



Antibacterial drain channels with drain for production areas



Useful and functional dispensers.

A wide range of efficient, functional, and high-quality products is available, made from durable materials (such as ABS and stainless steel), with high storage capacity and a simple, modern design.



Available in the following colors:



FOAM DISPENSER CARTRIDGE-BASED



PAPER TOWEL DISPENSER



WASTE PAPER BIN FLOOR / WALL MOUNTED



TOILET PAPER DISPENSER



DISPENSERS AND COMPLEMENTARY ACCESSORIES



Sanitary bag dispenser



Toilet seat cover dispenser



Toilet brush holder
Wall/floor mounted



Napkin dispenser

STAINLESS STEEL FOAM DISPENSER CARTRIDGE-BASED



STAINLESS STEEL DISPENSER FOR PAPER TOWELS/TOILET PAPER



STAINLESS STEEL TOILET BRUSH HOLDER WALL/FLOOR MOUNTED



WALL-MOUNTED BOOT/SHOE DRYER

Ozone drying and sanitization for boots and shoes

l 600 - w 620 - h 1.830 mm



BOOT/SHOE DRYER CABINET

Ozone drying and sanitization for boots and shoes

l 600 - w 760 - h 1.980 mm



ASCIUGA GUANTI A PARETE

Asciugatura e igienizzazione guanti ad ozono con timer

l 200 - w 315 - h 2.015 mm



MANUAL APRON AND BOOT WASHER

Made of Stainless Steel

l 1.200 - w 600 - h 2.000 mm



SANITIZING CABINET FOR KNIVES

UVC Rays

I 550 - w 740 - h 2.050 mm



SANITIZING CABINETS FOR EQUIPMENT

UVC Rays



OZONE DRYER ASCIUGAMIX

Drying and sanitizing of clothing and equipment, equipped with timer

I 1300 - w 800 - h 2.100 mm



OZOROOM

Ozone disinfection chamber

I 1440 - w 816 - h 2.080 mm



KNIFE STERILIZER UV RAYS

14 pieces



HOT WATER KNIFE STERILIZER

For 6 to 10 pieces – Immersion type



KNEE-ACTIVATED SINK WITH KNIFE STERILIZER

For 4 pieces – Immersion type



KNEE-ACTIVATED SINK WITH KNIFE STERILIZER

For 3 pieces – Immersion type



Complete
product
range:



SINKS ECONOMY LINE

Made of stainless steel, ready for installation, with knee-operated, pedal, or electronic dispensing, HACCP compliant.



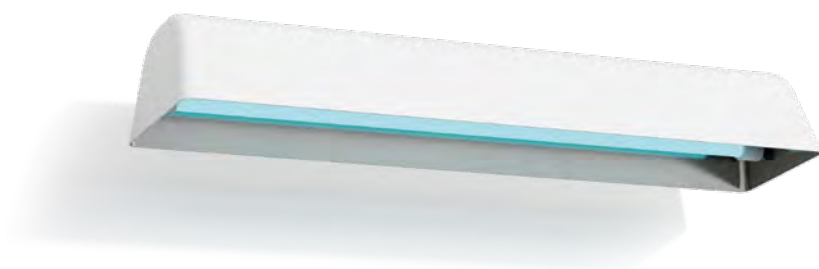
PEDAL-ACTIVATED SINK WITH KNIFE STERILIZER

For 6 pieces – Immersion type



ULTRAVIOLET LAMP

Direct light



ULTRAVIOLET LAMP

Custom shielded light



Custom laboratories:
technical furnishings for modern,
safe, and efficient spaces.



The furnishings for scientific laboratories are designed to meet the specific needs of chemical, microbiological, instrumental, and analytical environments. The wide variety of materials and configurations available allows for the creation of practical and safe spaces, ensuring a high level of professionalism in every detail.



Design your ergonomic laboratory with modular solutions, high-quality materials, and a modern design.

The spaces are designed to adapt to the needs of **modern and dynamic laboratories**, combining functionality with refined design. Every aspect is crafted to optimize operational efficiency

and create pleasant, comfortable environments. Furthermore, each component undergoes rigorous quality controls to ensure **safety, durability, and high performance over time.**



UNDERCOUNTER CABINETS

A wide range with doors and drawers, available in fireproof laminate CLASS 1 or powder-coated metal CLASS 0.



CHEMICAL FUME HOOD

Aerodynamic optimization and energy savings, electronic control system, advanced ergonomics and design.



SAFETY CABINETS

Filtered exhaust cabinets for the storage of acidic and basic chemical products.



WHEELED STOOL

Seat and backrest in polyurethane, adjustable backrest height



AUTOCLAVE 24 L

Class B, compliant with EN 13060 standards

l 460 - w 610 - h 455 mm



REFRIGERATED CABINET

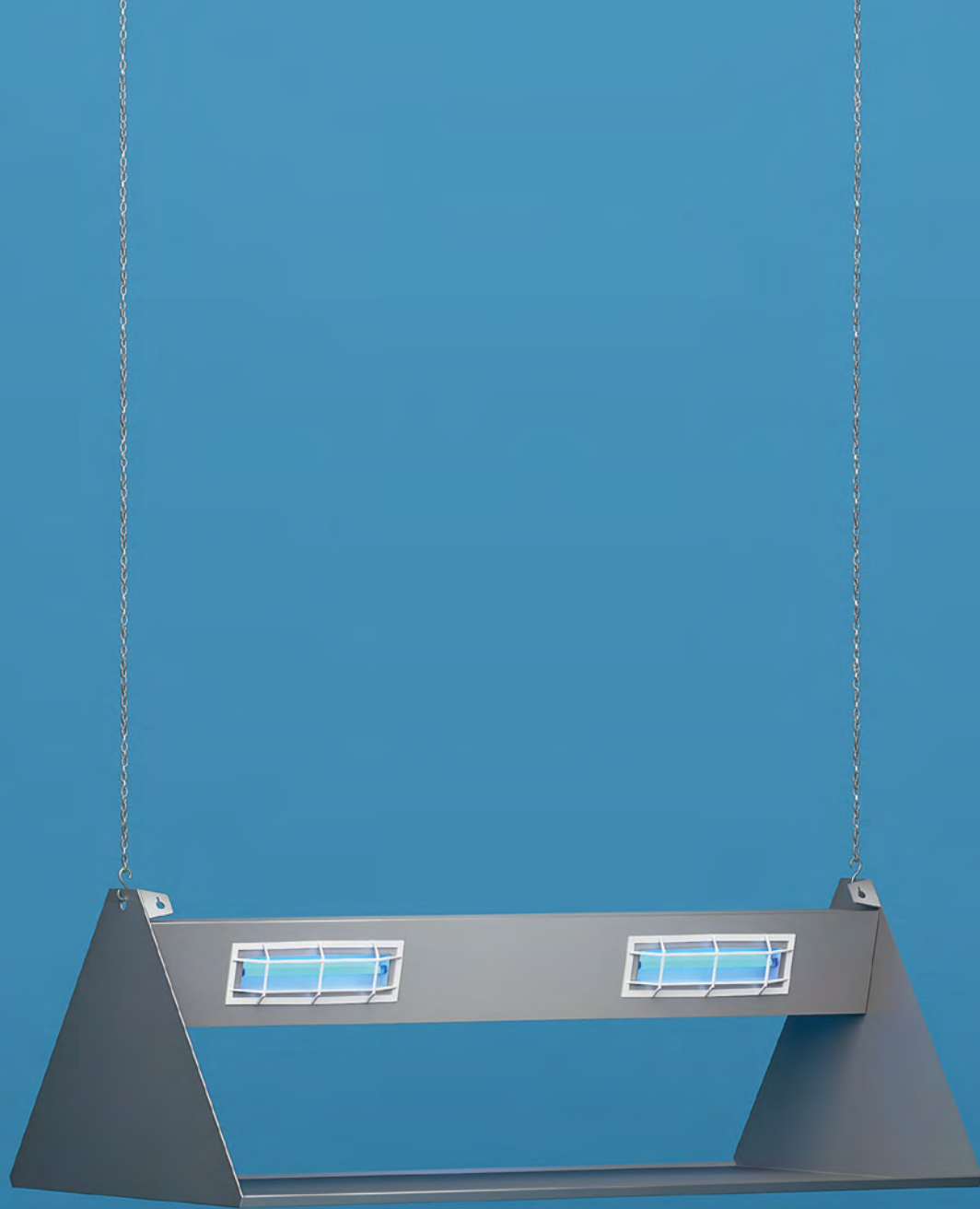
-2°C/+8°C, with adjustable feet or wheels, also available in the double-door version.



GLASSWASHER

Large size, with USB input or PC connection for recording laboratory data





3— Sanitization and cleaning



Work
Peacefully

Industrial stainless steel scrubbers and floor scrubber dryers

OT (Ground Operator) and OB (Onboard Operator), available in both electric and battery-powered versions.

SINGLE DISC SCRUBBER

Low or medium speed



OT36

Cleaning path 360 mm



OT46

Cleaning path 460 mm



OT50

Cleaning path 500 mm



OT61

Cleaning path 610 mm



OT81

Cleaning path 810 mm



OB75

Cleaning path 750 mm



OB85 - 100

Cleaning path 810/1000 mm



OB110-D

Cleaning path 1100 mm



OB110-R

Cleaning path 1100 mm



OTPC

Cleaning path 500/730 mm



OTK

Cleaning path 500/780 mm



OBTG

Cleaning path 650/1.055 mm



OBRD

Cleaning path 700/1.200 mm



OBXT

High maneuverability
Cleaning path 800/1.400 mm



OBMG

With hydraulic discharge
Cleaning path 900/1.570 mm



OBBL

Direct load, front guide with Bullsystem® technology
Cleaning path 1270/2100 mm



STREET SWEEPER

New generation of sweepers for cities and industry



High-pressure cleaners and steam machines

Hot and cold versions available.

HIGH-PRESSURE HOT WATER CLEANERS

KHDS 1021-4M – Flow rate (l/h): 500-1000 – Working pressure: 30-210 bar

KHDS 920-4M – Flow rate (l/h): 450-900 – Working pressure: 30-200 bar



HIGH-PRESSURE HOT WATER CLEANER

C3 pump – 21 l/min – 180 bar



HIGH-PRESSURE COLD WATER CLEANER

Max water temperature: 75°C – Stainless steel frame

C3 pump – 21 l/min – 195 bar



HIGH-PRESSURE HOT WATER CLEANER

Stainless steel frame – 21 l/min – 200 bar



HIGH-PRESSURE COLD WATER CLEANER

Can be supplied with hot water up to 60°C

Stainless steel frame

21 l/min – 140 bar



With suction for conveyor belt cleaning

STEAM MACHINES

VAPOR PLUS ULTRA
36 kW

VAPOR PLUS MAXI
From 7.2 to 20.75 kW

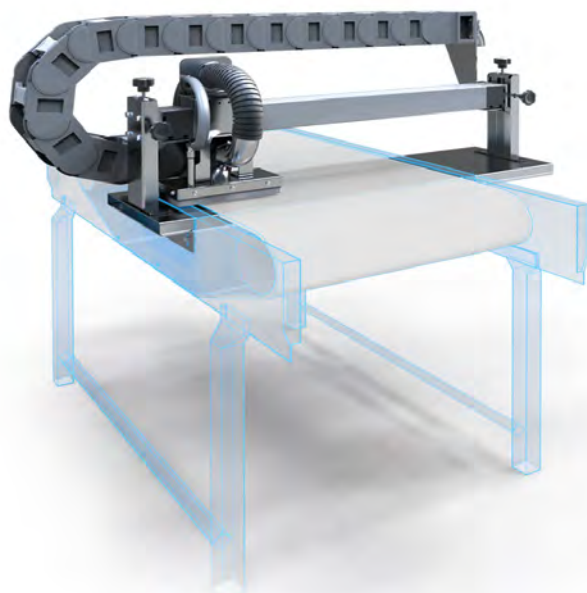
VAPOR PLUS MEDIUM
From 7.2 to 14.4 kW

VAPOR PLUS MINI
3,6 kW



STEAM BELT CLEANER

Fixed, automated, or semi-automatic



STEAM HIGH-PRESSURE CLEANER

From 10.5 kW to 15.9 kW





ATEX-certified products ensure safety in environments at risk of explosions

5.5 HP 90L THREE-PHASE TURBINE VACUUM CLEANER

Standard and ATEX versions - 90 l tank



ATEX PNEUMATIC VACUUM CLEANER

Dusts/Liquids for zone 21-22 - 90 l tank



ATEX VACUUM CLEANER

Single-phase - 25 l tank



ATEX FLOOR SCRUBBER DRYER

Brushless AC Motors - Cleaning path: 660 mm
Solution/Recovery tank capacity: 80/90 l



ATEX VACUUM CLEANER

Dust 25 l tank



VACUUM CLEANER FOR LIQUIDS AND SOLIDS

Solid filtration system - 300 l capacity



TWO-MOTOR SINGLE-PHASE VACUUM CLEANER

Dusts/Liquids - 50 l tank



THREE-MOTOR VACUUM CLEANER

Stainless steel, dusts/Liquids - 90 l tank

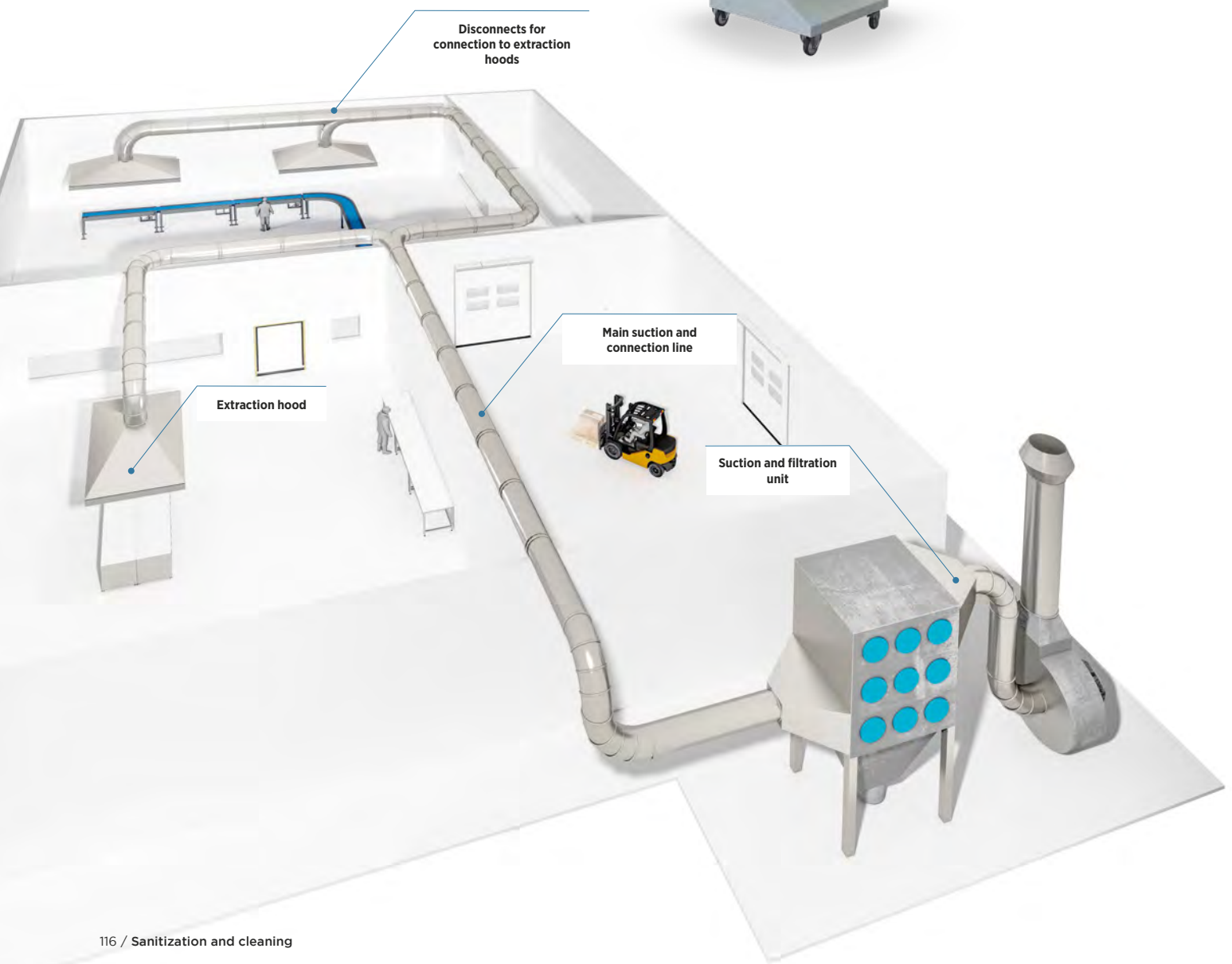


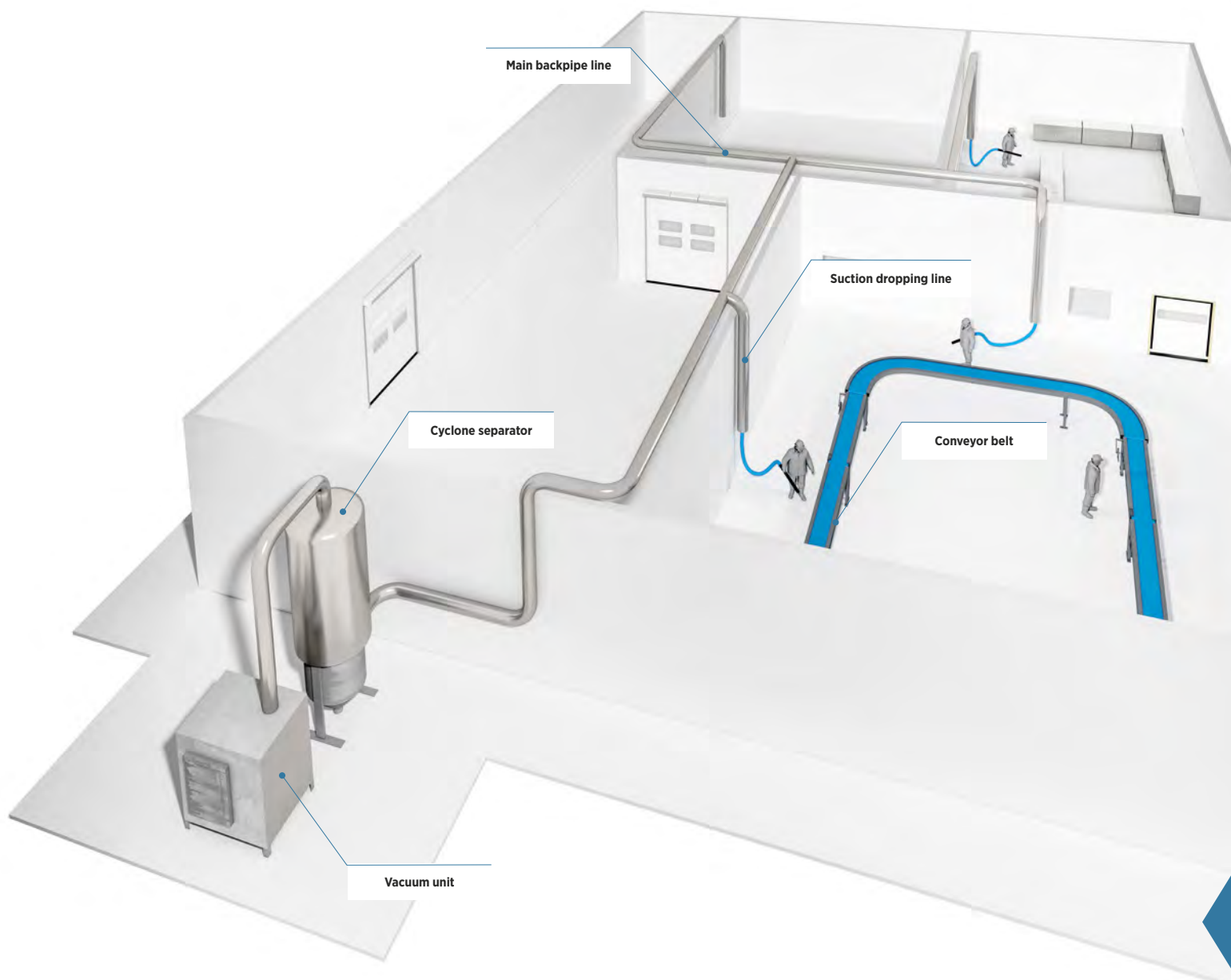
Airflow vacuum and filtration.

The airflow vacuum and filtration system is designed for the extraction of fine dust generated within various production departments. Also available in the ATEX version.

CARTRIDGE DUST COLLECTOR FILTER

Available in standard or ATEX versions, with one or two arms for dust extraction





Prevalent suction.

The prevalent suction system is a centralized dust extraction system designed for dry cleaning of production lines and environments.

Also available in the ATEX version.

Compact, durable, and high-performance machines.

Dishwashers, tray washers, and multifunctional object washers, suitable for any type of sector. Designed sustainably, they guarantee the best results with the lowest consumption of water, energy, and chemicals.



Complete
product
range:



PARTS WASHERS 650 R - 1000 R - 1300 R

Versions with tilt-up opening

Useful internal space:

l 513 - w 519 - h 593 mm

l 863 - w 660 - h 693 mm

l 1.140 - w 660 - h 693 mm



PARTS WASHERS 1300 G - 1500 G - 1800 G

Versions with guillotine opening

Useful internal space

l 1.140 - w 660 - h 678 mm

Utile interno:

l 1.140 - w 660 - h 678 mm

Utile interno:

l 1.644 - w 1.030 - h 855 mm



GLASSWASHER

With basket for glasses with inclined bottom
500 x 500 mm



DISHWASHER

With basket for 18 plates, flat-bottomed basket, and
cutlery holder
500 x 500 mm



Complete
product
range:



DISHWASHERS AND TRAY WASHERS

Raised, front-loading, with 500 x 500 mm basket



DISHWASHERS AND TRAY WASHERS

Hood-type opening with integrated steam condenser,
500 x 500 mm basket



Professional dishwashers: advanced technologies for optimal cleaning.

Designed to ensure fast and flawless cleaning, these machines meet the needs of high capacity in high-intensity environments.

Thanks to advanced technologies, they deliver excellent results with reduced water and energy consumption, optimizing operational efficiency while maintaining a fast and continuous workflow.



Washing machines

Customized according to quantity and size.

SINGLE CHEESE WASHER

For small quantities



CURED MEATS WASHER

For washing and blowing on trolleys and frames, or hanging trays on overhead rails.



OBJECT WASHER

For cutting boards, baskets, gloves, knives, and small equipment



WASHING KIT FOR PANELS AND DRUMS



DRUM WASHER

Made of AISI 304 stainless steel – rotating brushes and spray nozzles, cleans up to 2 drums with bidirectional rotation



TROLLEY WASHER



Washing machines

Customized according to quantity and size.

WASHING CABINS

with rotating base



CART WASHER

For cleaning large equipment such as trolleys, frames, tables, and cages



WASHING TUNNEL

Compact size, dual speed, washes and rinses up to 180 crates/hour



CRATE WASHER

For continuous washing of small and medium-sized containers and crates



SANITIZING TUNNEL

With UV lamp



INDUSTRIAL WASHING MACHINES

High-speed centrifuges, basket and tank made of AISI 304 stainless steel, touch screen computer

Models with capacities ranging from 8 to 125 kg



ROTARY DRYERS

Basket made of AISI 304 stainless steel and touch screen computer

Models with capacities ranging from 10 to 75 kg



FULLY ENCLOSED CLOTH WASHER

Made entirely of stainless steel, 14 kg - 19 kg



DRYER

Made entirely of stainless steel

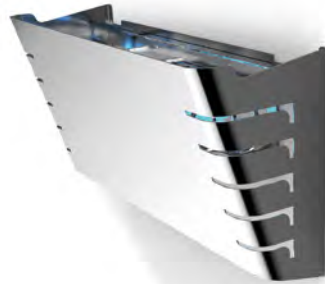


Equipment for dairies



STAINLESS STEEL INSECT TRAPS

Lamp for dry areas



STAINLESS STEEL INSECT TRAPS

Lamp for humid areas, IP65



Color-coded equipment

Color-coded equipment for different departments, in compliance with HACCP (Hazard Analysis and Critical Control Point) standards.

Complete
product
range:



**BRUSHES AND
SPONGES**



SCOOPS



CRATES



Available in the following colors:



PADDLES, LADLES, AND SHOVELS



BUCKETS



TOOL HOLDER

3 slots - l 540 - w 126 - h 200 mm / 1 slot - l 156 - w 126 - h 140 mm



TRASH BIN



Color-coded equipment

CLEANING BOARD ON TROLLEY

Made of stainless steel



CUSTOM CLEANING BOARD

Available upon client request



CUSTOM CLEANING BOARDS

With color coding



Cleaning Board: the ideal solution for tool separation across departments

Cleaning boards are panels designed to hold tools and accessories used for cleaning and sanitizing work areas. They are color-coded according to the specific environment in which they are used, helping to prevent cross-contamination and ensuring hygienic standards are maintained.



Detectable equipment

Detectable equipment, detectable by metal detectors and X-rays, available in color-coded versions.



PENS AND MARKERS

Retractable pens and whiteboard markers



BADGE HOLDER AND CLIPBOARD



SCRAPERS



CALCULATORS AND STOPWATCH



CUTTERS AND SCISSORS



SCOOP AND PITCHER



Available in the following colors:



CUTLERY

Professional



RESIN BRUSHES AND DUSTPAN

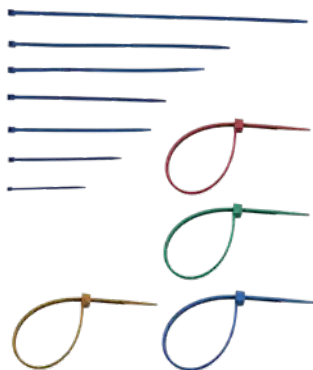


SHOVELS AND MIXERS



CABLE TIES

In color code



SPECIAL ITEMS



CLOTHING



PPE



TESTERS



BUCKETS AND CRATES





Every activity
requires clothing that
protects the operator
during their work.

We have selected a wide range of clothing specifically designed for different tasks, from disposable garments for food processing areas to those for various production and maintenance areas.

DISPOSABLE LINE

In color code

- Full disposable hood with integrated 3-layer mask
- Smock with PLP collar
- Shoe covers

DISPOSABLE LINE

Color-coded

- Hair Cap
- Surgical Mask
- Sleeve Cover / Arm Cover
- Disposable Nitrile Glove
- Water-Resistant LDPE Apron
- LDPE Boot Covers



FOOD LINE

Wash at 90° C

- Hat
- Neck warmer
- Jacket
- Pants
- Shoes

Complete
product
range:



WATERPROOF LINE

Complete
product
range:



- Helmet
- Waterproof mask
- Jacket

- Pants
- Boots



COLD PROTECTION LINE

- Balaclava
- Glove
- Jacket
- Pants
- Ankle boots

Complete
product
range:



METALWORKING LINE

Complete
product
range:



- Cap
- Nylon/latex gloves
- Jacket

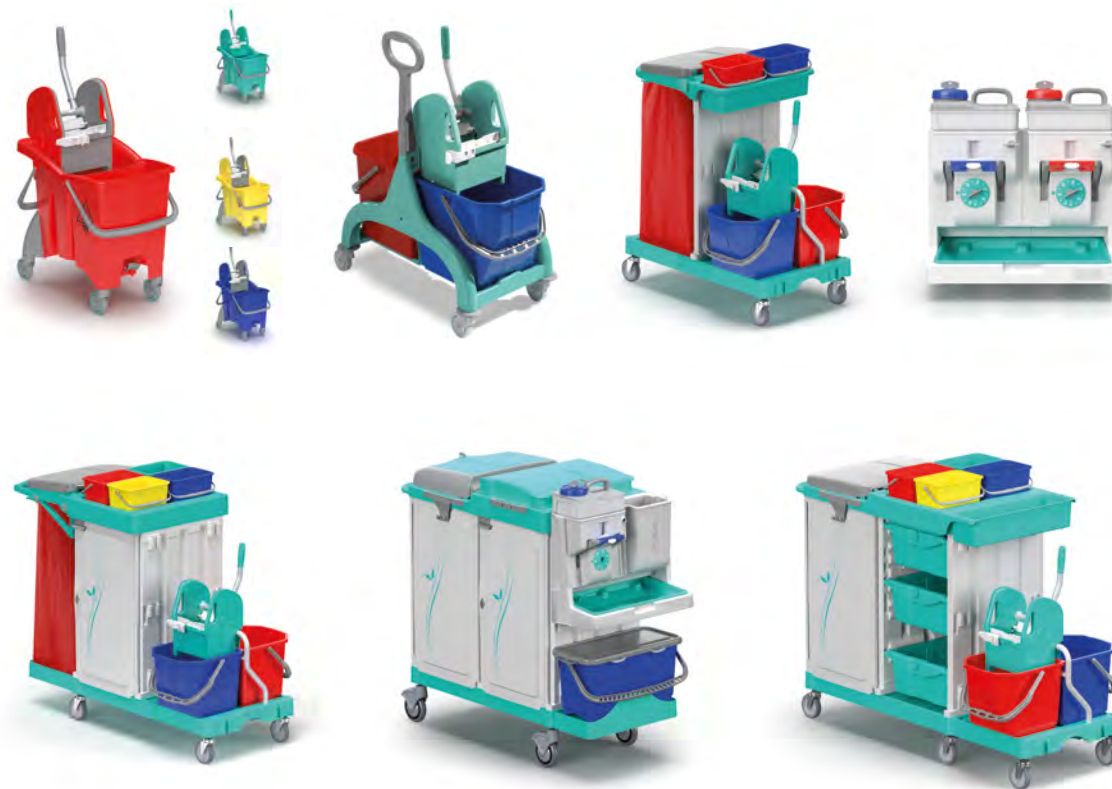
- Pants
- Shoes



Complete
product
range:



EQUIPPED CLEANING TROLLEYS



CLEANING AND SANITIZING KIT

Professional



CERTIFIED PAPER ROLLS

For food use



WASTE BAGS

For recycling



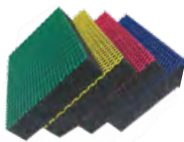
FLOOR CLEANING

Equipment and spare
parts



SPONGES AND CLOTHS

In color code



DETERGENTS



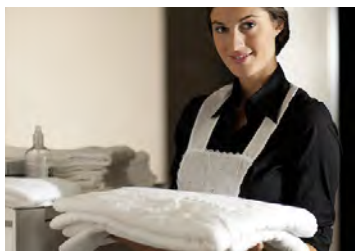
For the food industry



For the metalworking industry



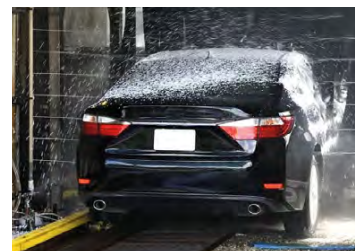
For hospitals and biomedical use



For laundries



For hotels and restaurants



For car washes



For personal hygiene



For dosing



Pest control and rodent control



BORIN - Authorized distributor for Italy.

The innovative air and surface sanitization system.

RefineAir purifies the air using PCO Technology (Photocatalytic Technology) and bipolar ionization.

This technology helps eliminate microbial load (bacteria, viruses, molds) and volatile organic compounds, neutralizing allergens and odors, to protect people, animals, the environment, and the ecosystem.



PHOTO4ALL S / PHOTOIONIX S

Sanitization capacity from 10 to 120 m³
 I 380 - w 90 - h 90 mm



PHOTO4ALL M / PHOTOIONIX M

Sanitization capacity from 120 to 220 m³
 I 420 - w 130 - h 135 mm



PHOTOIONIX L

Available for wall installation or portable use
 Sanitization capacity from 600 to 1200 m³
 I 470 - w 270 - h 430 mm



HOME

Sanitization capacity up to 90 m³



LITTLE CAMP/LITTLE CAMP PLUS

Also available in the built-in version
 Sanitization capacity from 120 to 200 m³
 I 240 - w 320 - h 170 mm



VISION

Sanitization capacity from 300 to 600 m³ (one IPG module)
 Sanitization capacity from 600 to 1200 m³ (two IPG modules)
 I 600 - w 420 - h 270 mm



SENSE EVO

Allows continuous monitoring of pollutants in environments using a dedicated app
 I 100 - w 30 - h 80 mm



MINICUBE

Compact air purifier; reduces bad odors, prevents mold formation, and eliminates bacterial loads in refrigerators



HT Surface – Nanotechnological protection for safe surfaces

HT Surface is an innovative nanotechnological coating that creates an **invisible barrier** against dirt, bacteria, and pollutants, making cleaning easier and improving surface hygiene. Thanks to its **hydrophobic and photocatalytic formulation**, it repels impurities, **eliminates viruses, and helps purify the air**, ensuring healthier and more protected environments.

Unlike traditional disinfectants, **HT Surface maintains its effectiveness over time** because

its action regenerates with each cleaning. Its nanotechnological structure prevents viruses and bacteria from adhering, providing active protection both in light and darkness.

Easy to apply with a spray or microfiber cloth, **HT Surface does not contain metallic nanoparticles or biocides.** It is an innovative solution for those who want a safer and more protected environment with minimal maintenance effort.



These devices sanitize the air by eliminating harmful agents without the use of chemicals or harmful light sources, making them safe for people and animals.

OZONE SANITIZER

Available in various sizes



OZONE THERAPY SANITIZER



MISTING SANITIZER

Compressor Power Supply: 220 V
For desks and offices



ATOMIZER

Power Supply: 220 V – For Medium/Large Spaces



MISTING SANITIZERS

Compressed Air Supply – For Large Spaces



Special accessories for safety

The protections are available in powder-coated steel or in stainless steel.

PROTECTION FOR MEZZANINES WITH CANTILEVER OPENING

The movable part of the safety gate is manually lifted upwards.



GATE FOR MEZZANINES WITH ROCKER ARM OPENING

Consists of three rocker arms that slide along the side of the goods and fold up on the open side.



Watch the
product in
action:



GATES FOR MEZZANINES WITH GUILLOTINE-STYLE OPENING

Featuring an internal lifting barrier, it allows the
loading area to remain clear when not in use.



ACCORDION-STYLE PROTECTION FOR PALLET LIFTING SYSTEM

Extendable cover that isolates moving parts, ensuring safety and order in the loading area during use.



CUSTOM CONTAINERS

Tailor-made



PALLET TRUCK

Stainless steel or painted steel (available in color-coded versions)

Available in color code:



Economy line.

HIGH-PRESSURE CLEANERS

Professional



STEAM CLEANERS

Professional



FLOOR SCRUBBER DRYERS

Professional



CARPET CLEANERS

Professional



MOBILE STAIR CLEANERS

Professional



Motorized.

ELECTRIC PEOPLE CARRIER

For loads up to 1,000 kg – wide range of standard or customizable hooks available upon request.
Can carry up to 50 kg (in addition to the operator's weight).
Equipped with pneumatic wheels for both indoor and outdoor use.



ELECTRIC TOW TRACTOR

Made of AISI 316 stainless steel – for loads up to 1,500 kg.
5-level speed selector. Wide range of standard or customizable hooks available upon request.
Antibacterial/interchangeable polyethylene battery pack to ensure 24/7 operation.



Solar panel and glass cleaning.

REVERSE OSMOSIS MACHINE

With pure water system



COMPLEMENTARY ACCESSORIES



DEVELOPMENT

Development is the driving force that leads humanity toward new horizons. It is the process of growth, change, and progress that pushes us to overcome limits and adapt to the challenges we encounter along the way.

Embracing knowledge, innovation, and the evolution of our capabilities helps build bridges between the present and the future, opening doors to unexplored opportunities.

Development thrives on curiosity, determination, and the boldness of those who dare to dream, create, and improve.

It is the constant desire to realize our potential and make a difference in the world around us.



Work
Peacefully



Follow us
on Youtube



View our client
portfolio



Download
our catalogue

Authorized Distributor in Italy

Certifications



